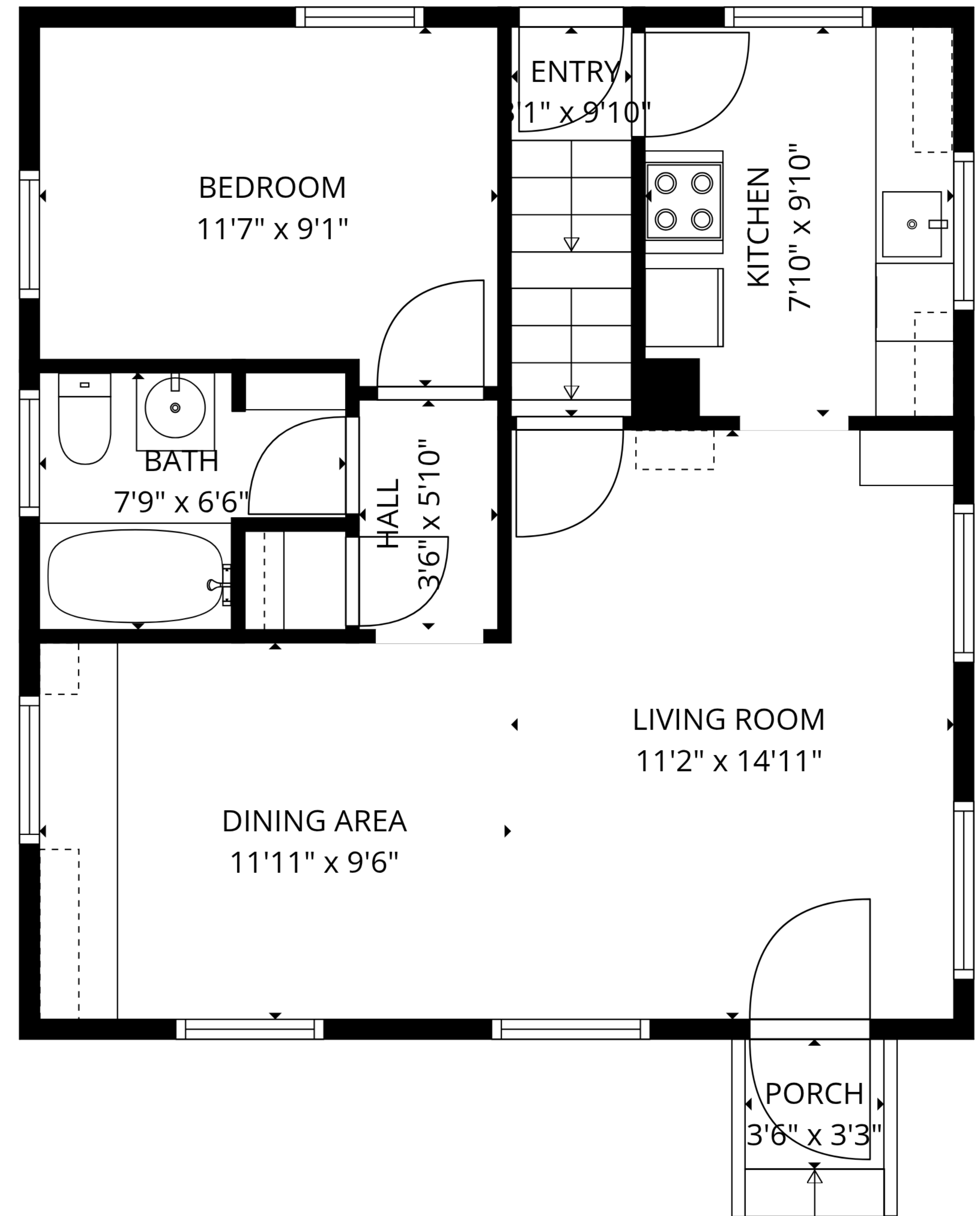
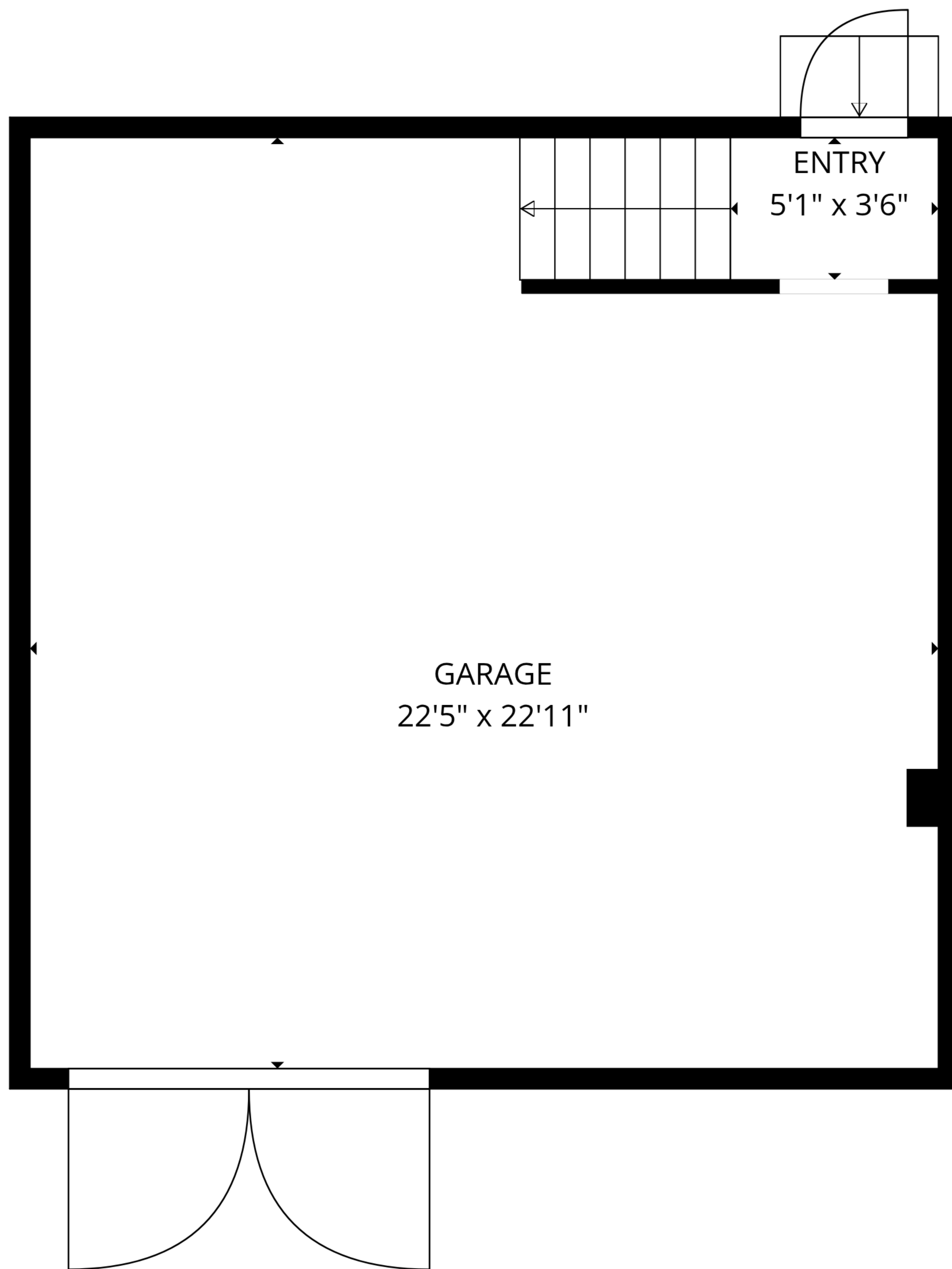


BASEMENT
23'1" x 24'1"

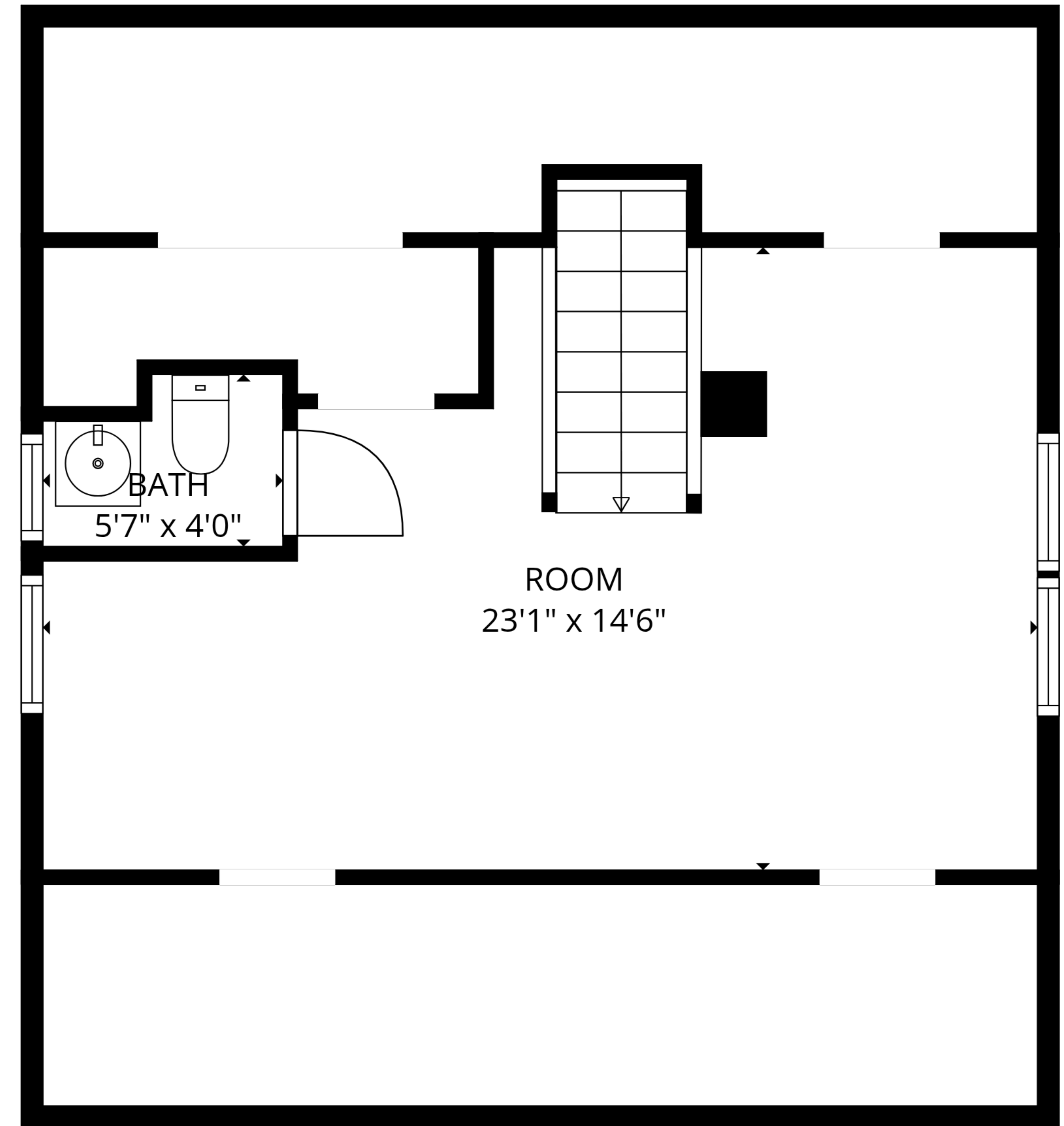
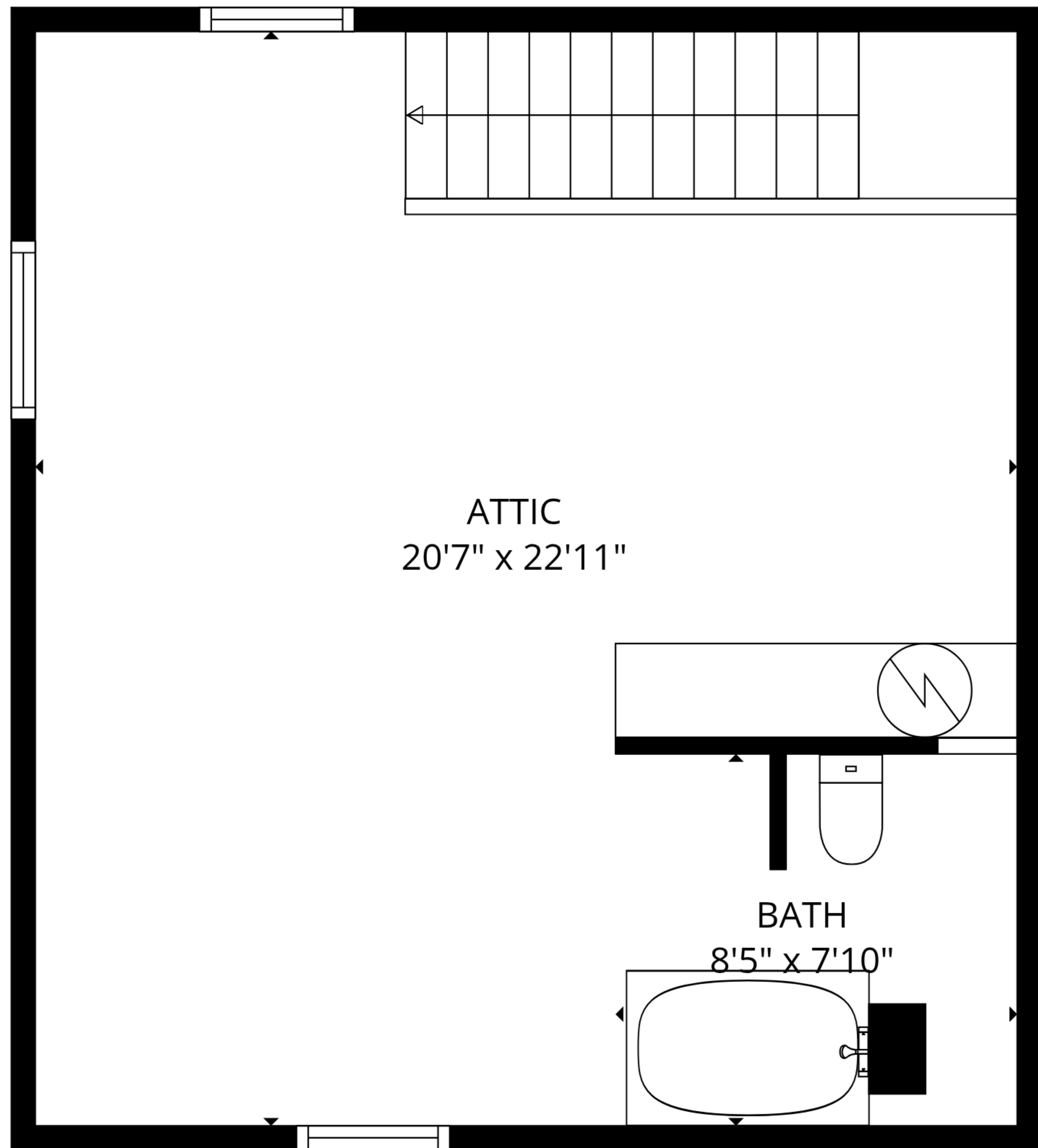
TOTAL: 1150 sq. ft

Basement 1: 0 sq. ft, 1st floor: 596 sq. ft, 2nd floor: 554 sq. ft

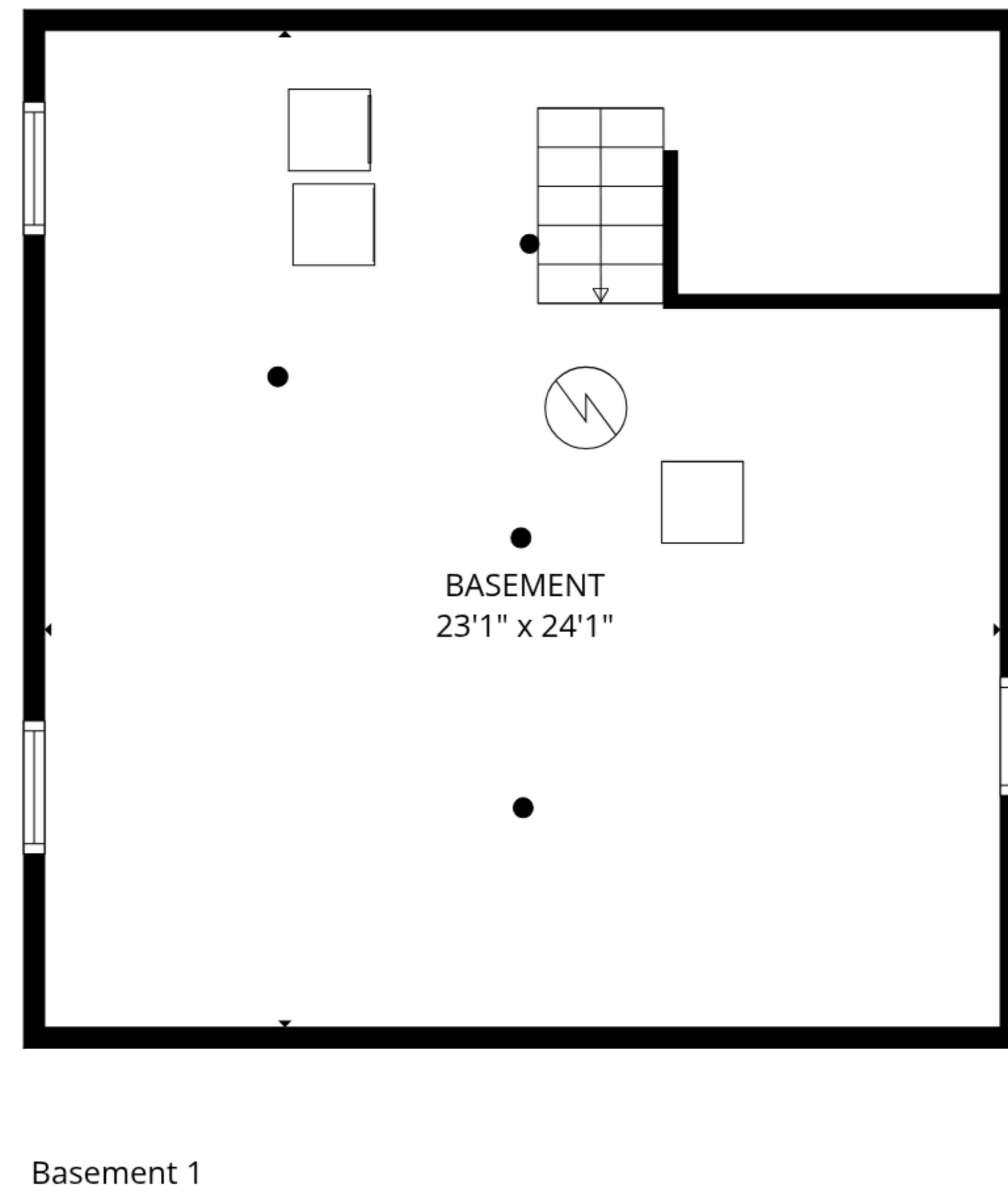
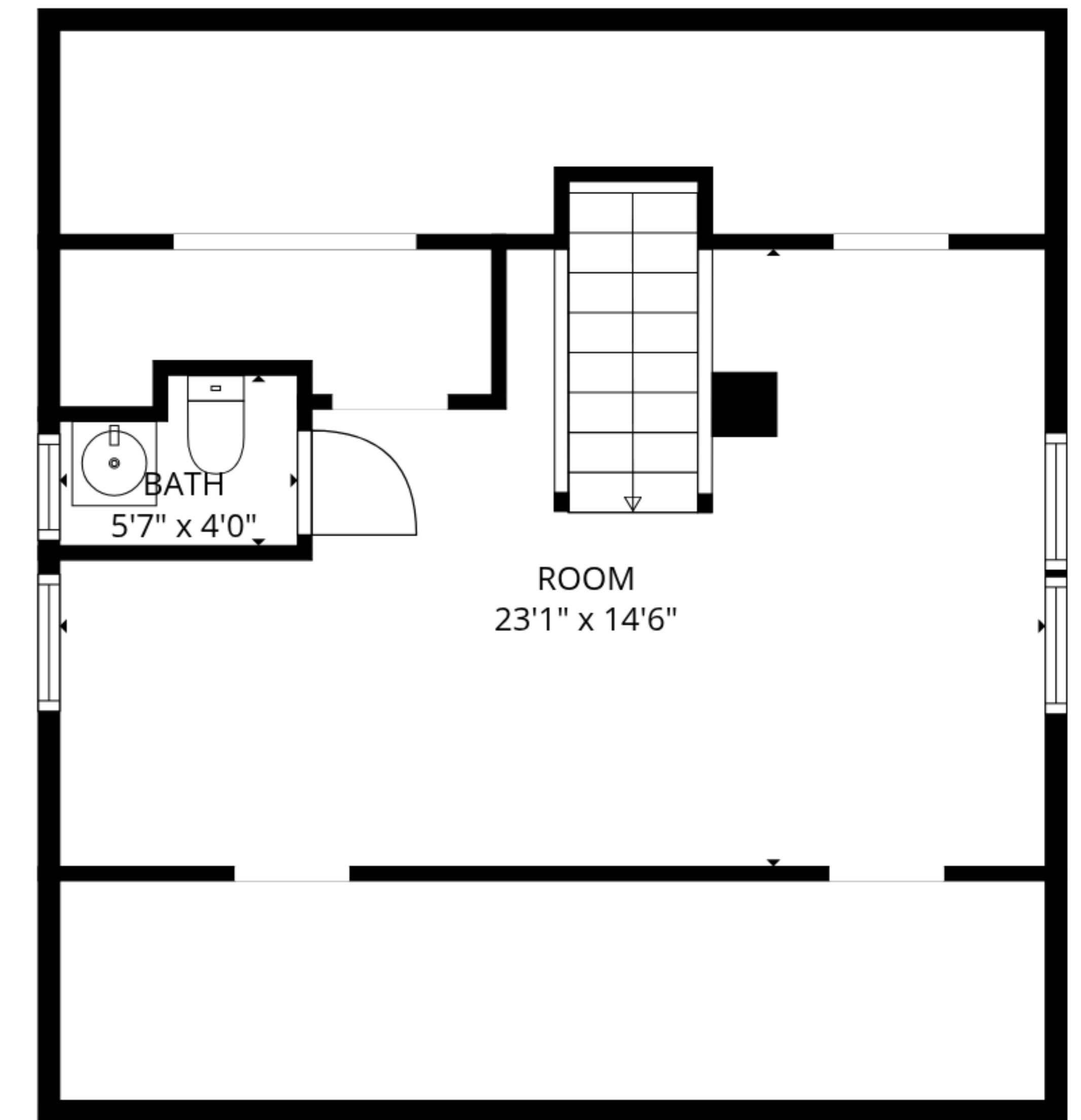
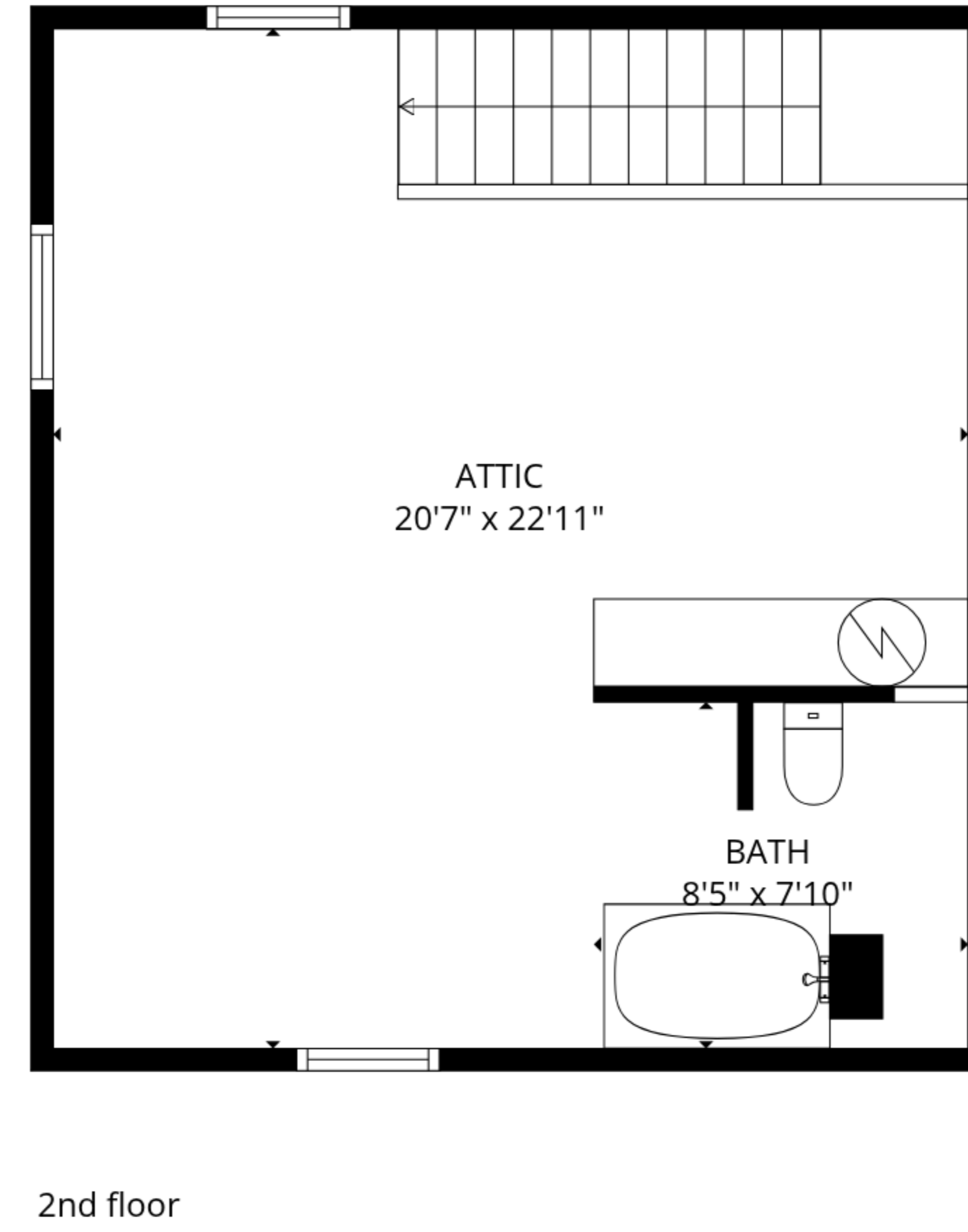
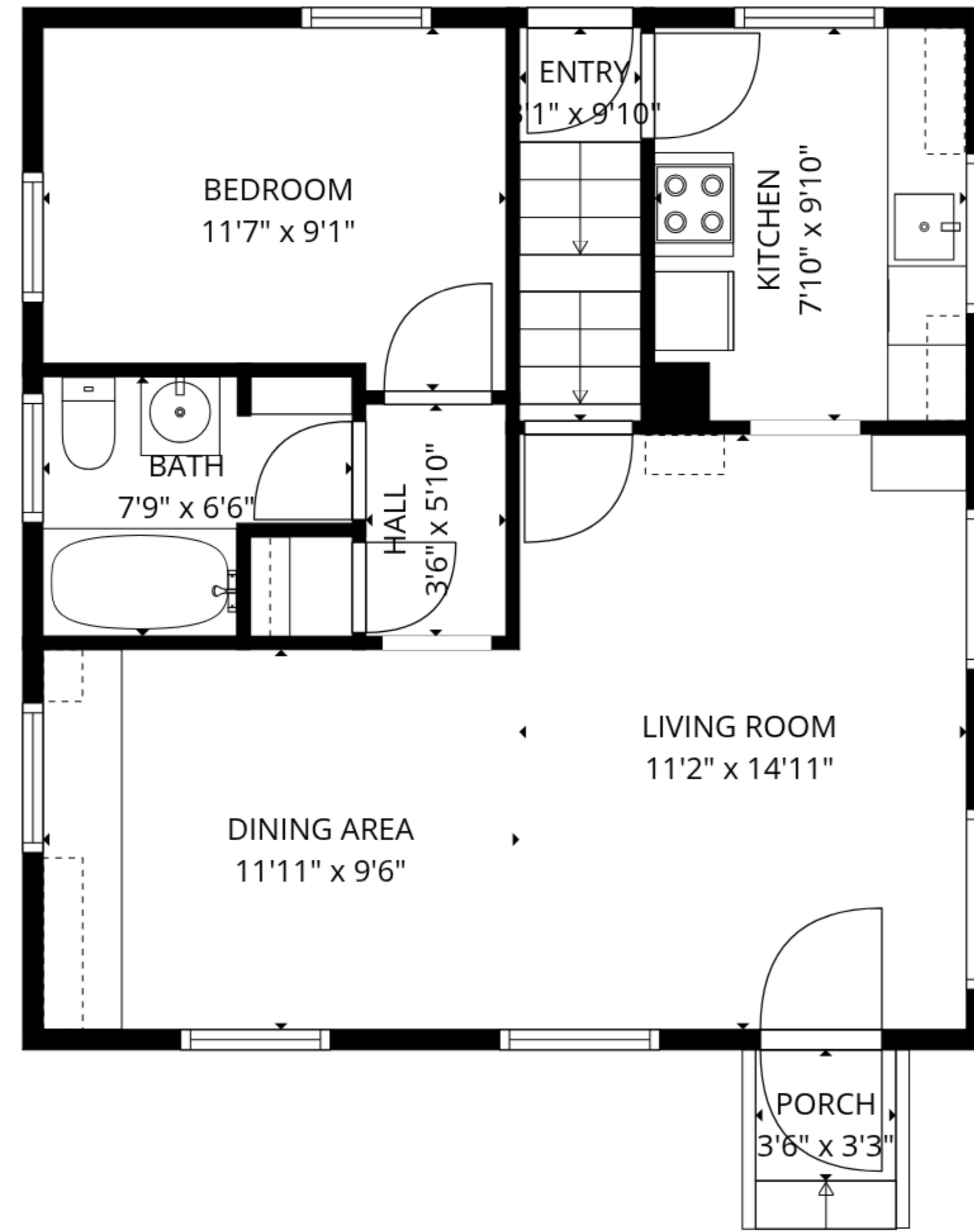
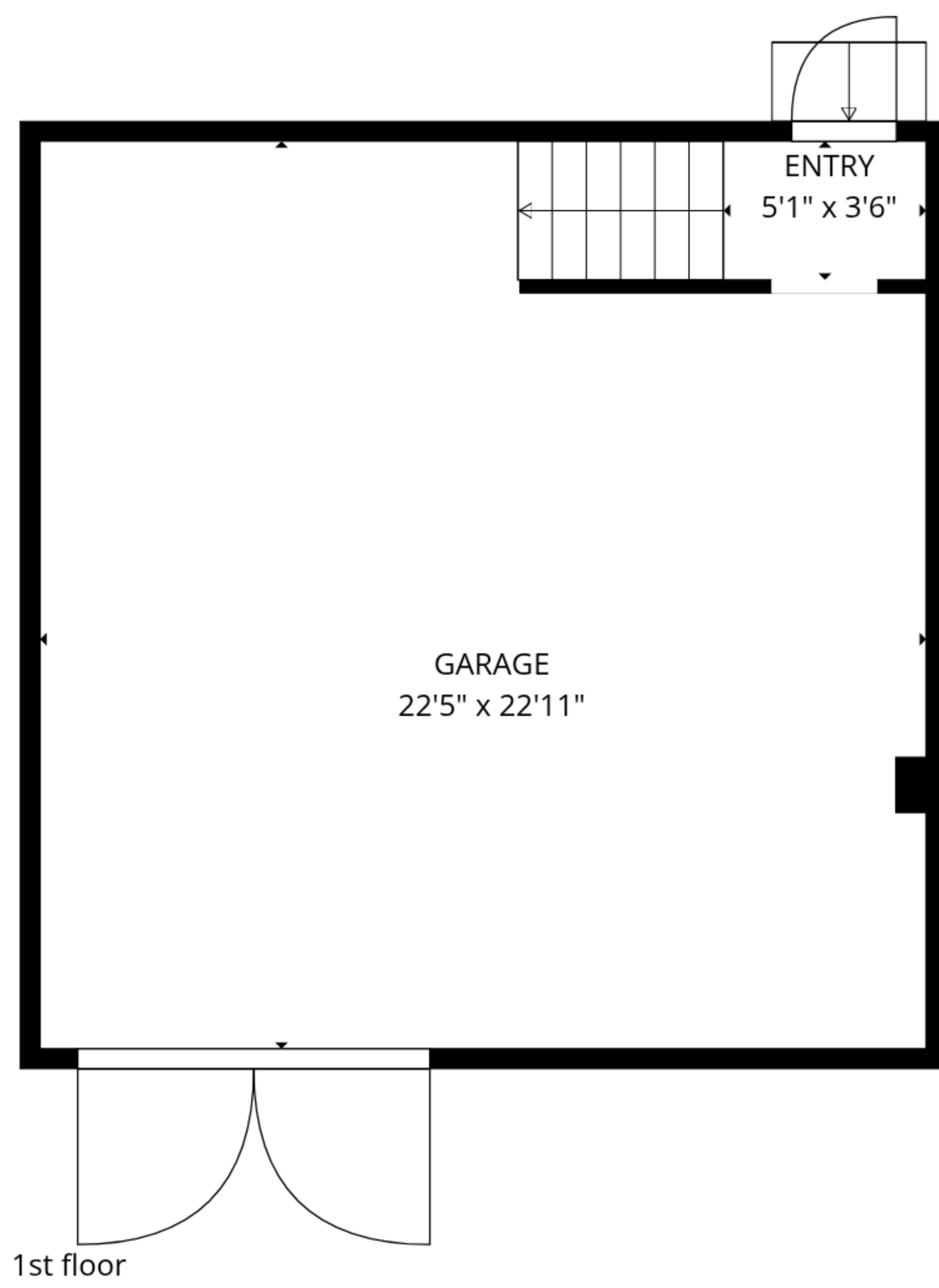
EXCLUDED AREAS: BASEMENT: 556 sq. ft, GARAGE: 493 sq. ft, PORCH: 12 sq. ft,
LOW CEILING: 498 sq. ft, WALLS: 240 sq. ft



TOTAL: 1150 sq. ft
 Basement 1: 0 sq. ft, 1st floor: 596 sq. ft, 2nd floor: 554 sq. ft
 EXCLUDED AREAS: BASEMENT: 556 sq. ft, GARAGE: 493 sq. ft, PORCH: 12 sq. ft,
 LOW CEILING: 498 sq. ft, WALLS: 240 sq. ft



TOTAL: 1150 sq. ft
 Basement 1: 0 sq. ft, 1st floor: 596 sq. ft, 2nd floor: 554 sq. ft
 EXCLUDED AREAS: BASEMENT: 556 sq. ft, GARAGE: 493 sq. ft, PORCH: 12 sq. ft,
 LOW CEILING: 498 sq. ft, WALLS: 240 sq. ft



TOTAL: 1150 sq. ft
 Basement 1: 0 sq. ft, 1st floor: 596 sq. ft, 2nd floor: 554 sq. ft
 EXCLUDED AREAS: BASEMENT: 556 sq. ft, GARAGE: 493 sq. ft, PORCH: 12 sq. ft,
 LOW CEILING: 498 sq. ft, WALLS: 240 sq. ft