

DRAWING NUMBER
Tillman
EST-17-05
Sheet of 2
FINAL MAP
FLAN HOLD CORPORATION • IRVINE, CALIFORNIA

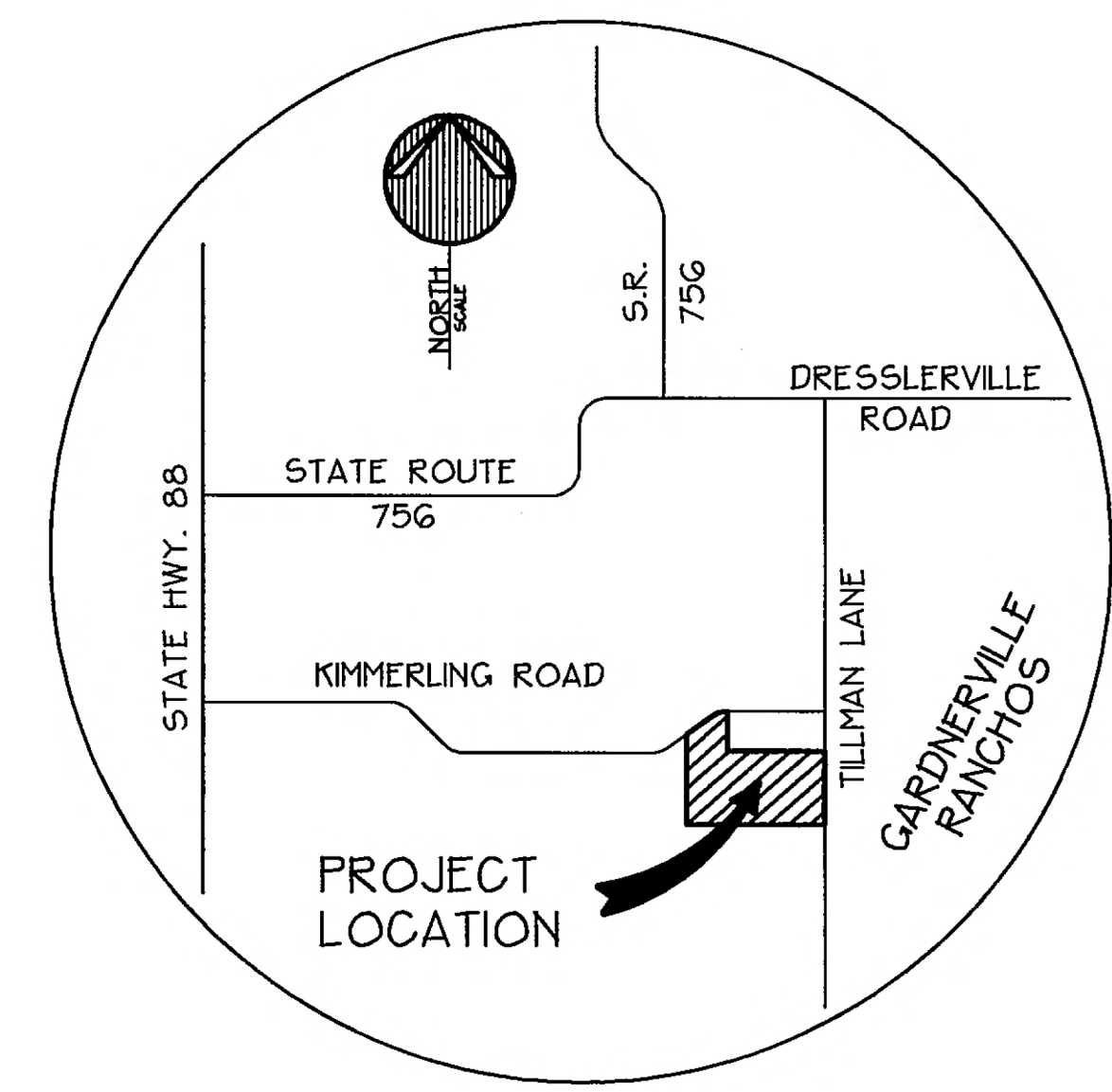
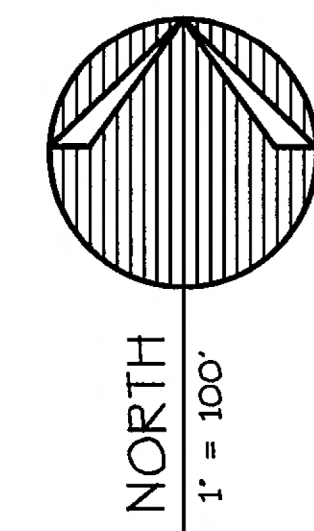
DRAWING NUMBER
FLAN HOLD CORPORATION • IRVINE, CALIFORNIA

DRAWING NUMBER
FLAN HOLD CORPORATION • IRVINE, CALIFORNIA

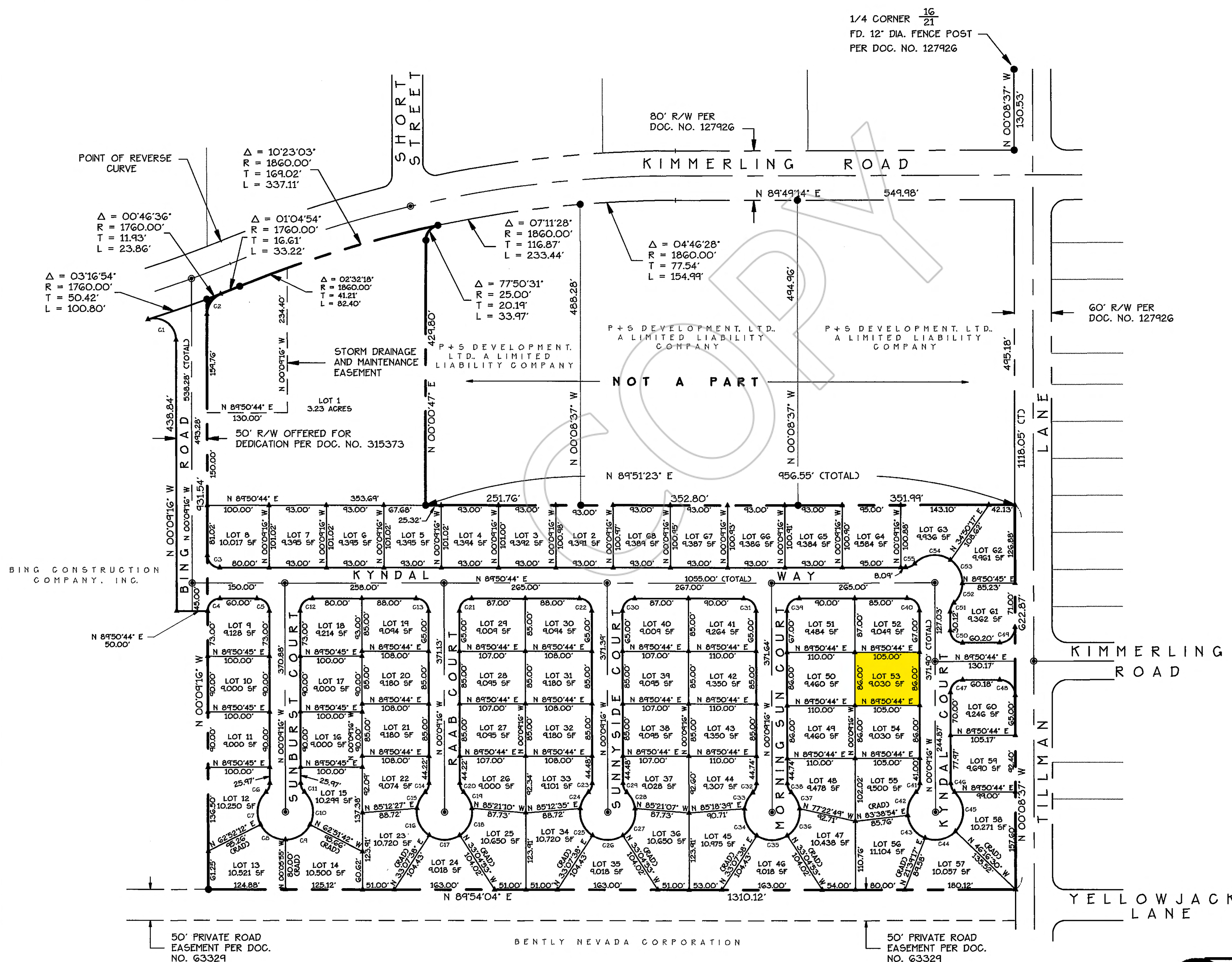
DRAWING NUMBER
FLAN HOLD CORPORATION • IRVINE, CALIFORNIA

CURVE	RADIUS	LENGTH	TANGENT	DELTA
C1	35.00'	60.51'	47.50'	107°14'07"
C2	35.00'	41.97'	23.92'	68°42'25"
C3	20.00'	31.42'	20.00'	90°00'00"
C4	20.00'	31.42'	20.00'	90°00'00"
C5	20.00'	31.42'	20.00'	90°00'00"
C6	20.00'	16.12'	8.53'	46°11'13"
C7	45.00'	57.46'	33.40'	73°04'49"
C8	45.00'	43.46'	27.56'	62°58'06"
C9	45.00'	43.29'	27.44'	62°48'43"
C10	45.00'	57.71'	33.59'	73°28'48"
C11	20.00'	16.12'	8.53'	46°11'13"
C12	20.00'	31.42'	20.00'	90°00'00"
C13	20.00'	31.42'	20.00'	90°00'00"
C14	20.00'	16.12'	8.53'	46°11'13"
C15	45.00'	30.04'	15.60'	38°15'02"
C16	45.00'	50.78'	28.48'	64°39'17"
C17	45.00'	52.00'	28.34'	66°12'30"
C18	45.00'	50.97'	28.61'	64°54'04"
C19	45.00'	30.13'	15.65'	38°21'32"
C20	20.00'	16.12'	8.53'	46°11'13"
C21	20.00'	31.42'	20.00'	90°00'00"
C22	20.00'	31.42'	20.00'	90°00'00"
C23	20.00'	16.12'	8.53'	46°11'13"
C24	45.00'	30.04'	15.60'	38°15'02"
C25	45.00'	50.78'	28.48'	64°39'17"
C26	45.00'	52.00'	28.34'	66°12'30"
C27	45.00'	50.97'	28.61'	64°53'54"
C28	45.00'	30.13'	15.65'	38°21'42"

CURVE	RADIUS	LENGTH	TANGENT	DELTA
C29	20.00'	16.12'	8.53'	46°11'13"
C30	20.00'	31.42'	20.00'	90°00'00"
C31	20.00'	31.42'	20.00'	90°00'00"
C32	20.00'	16.12'	8.53'	46°11'13"
C33	45.00'	30.04'	15.60'	38°15'02"
C34	45.00'	50.78'	28.48'	64°39'17"
C35	45.00'	52.00'	28.34'	66°12'30"
C36	45.00'	50.97'	28.61'	64°53'54"
C37	45.00'	30.13'	15.65'	38°21'42"
C38	20.00'	16.12'	8.53'	46°11'13"
C39	20.00'	31.42'	20.00'	90°00'00"
C40	20.00'	31.42'	20.00'	90°00'00"
C41	20.00'	16.12'	8.53'	46°11'13"
C42	45.00'	41.14'	22.34'	52°23'03"
C43	45.00'	48.69'	27.04'	61°54'38"
C44	45.00'	53.35'	30.31'	67°55'47"
C45	45.00'	70.74'	45.05'	90°03'59"
C46	20.00'	16.12'	8.53'	46°11'13"
C47	20.00'	31.42'	20.00'	90°00'00"
C48	25.00'	39.27'	25.00'	90°00'39"
C49	25.00'	39.27'	25.00'	89°59'21"
C50	20.00'	31.42'	20.00'	90°00'00"
C51	20.00'	16.12'	8.53'	46°11'13"
C52	45.00'	35.24'	18.58'	44°52'17"
C53	45.00'	44.23'	24.04'	56°19'01"
C54	45.00'	63.76'	38.56'	81°11'08"
C55	20.00'	16.12'	8.53'	46°11'13"



VICINITY MAP
NO SCALE



NOTES

- A 7.5 FOOT PUBLIC UTILITY EASEMENT SHALL EXIST ALONG ALL FRONT LOT LINES AND A 5 FOOT PUBLIC UTILITY EASEMENT SHALL EXIST ALONG ALL SIDE AND REAR LOT LINES
- AN 8 FOOT WIDE BY 15 FOOT LONG POSTAL CLUSTER BOX EASEMENT SHALL EXIST ALONG THE FRONT OF LOTS 6 + 7 AND LOTS 64 + 65. THE 15 FOOT DIMENSION SHALL BE SPLIT EVENLY ALONG THE COMMON LOT LINE OF THE LOTS MENTIONED IN THE PREVIOUS SENTENCE.
- ACCESS TO KIMMERLING ROAD AND TILLMAN LANE IS RESTRICTED FROM LOTS 2 THRU 68
- ALL LOTS WITHIN THIS SUBDIVISION ARE RESTRICTED TO ONE SINGLE FAMILY RESIDENCE
- TOTAL SITE: 21.95 ACRES

BASIS OF BEARING

N 00°08'37" W - THE WESTERLY LINE OF TILLMAN LANE AS SHOWN PER DOCUMENT NO. 127926 WAS USED AS THE BASIS OF BEARING FOR THIS MAP.

LEGEND

- FOUND 5/8" REBAR WITH TAG PLS 3209 UNLESS OTHERWISE INDICATED
- ⊙ SET CENTERLINE MONUMENT IN WELL PLS 6899
- ▲ SET 5/8" REBAR WITH CAP AT ALL PROPERTY CORNERS AND EACH END AND BEGINNING OF CURVES PLS 6899

SCALE: 1" = 100' SHEET 2 OF 2

A FINAL MAP
FOR
TILLMAN ESTATES
LOCATED IN THE NW 1/4 OF SECTION 21, T.12N., R.20E., DOUGLAS COUNTY, NEVADA

