



## About the Neighbourhood James Bay



SCAN ME



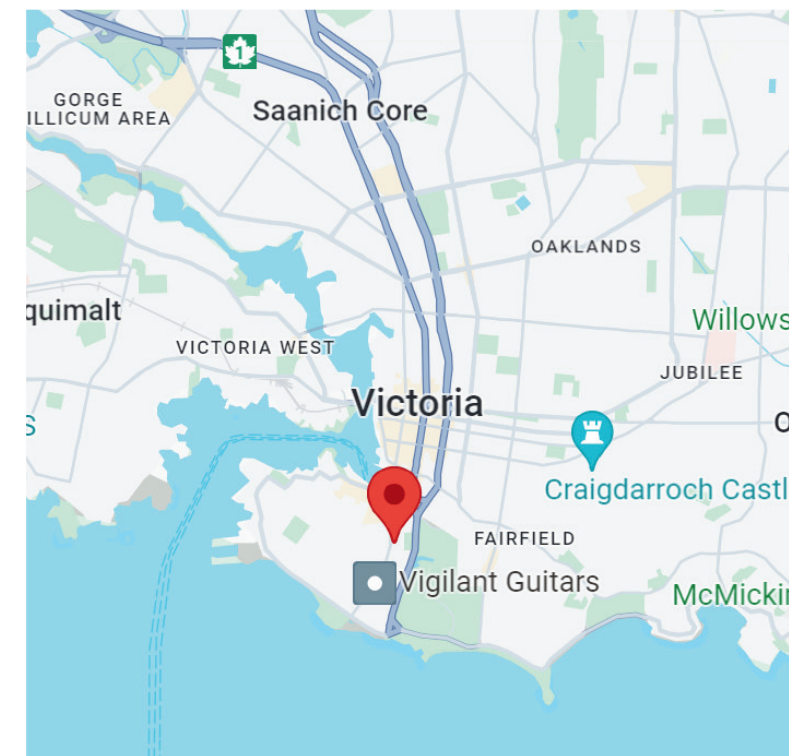
441

441/443 Government St- Victoria

[www.PinnacleHomesGroup.com](http://www.PinnacleHomesGroup.com)

Thomas Kala\* Courtney Kala\*

778-404-7668



This amazing property is located in the quiet and charming desired area of James Bay, a sought-after seaside neighbourhood. James Bay, the city's oldest neighbourhood is known for its lively waterfront and iconic Victorian homes. Close to beaches and many tourist attractions including Fisherman's Wharf, parliament buildings, Royal BC Museum, Ogden Point, Beacon Hill Park and much more. The neighbourhood is known for its active walking community. This marvelous location is just minutes to the inner harbor and amenities including groceries, restaurants, beaches, and floatplanes.

Pinnacle Homes Group

[thomas@pinnaclehomesgroup.com](mailto:thomas@pinnaclehomesgroup.com)

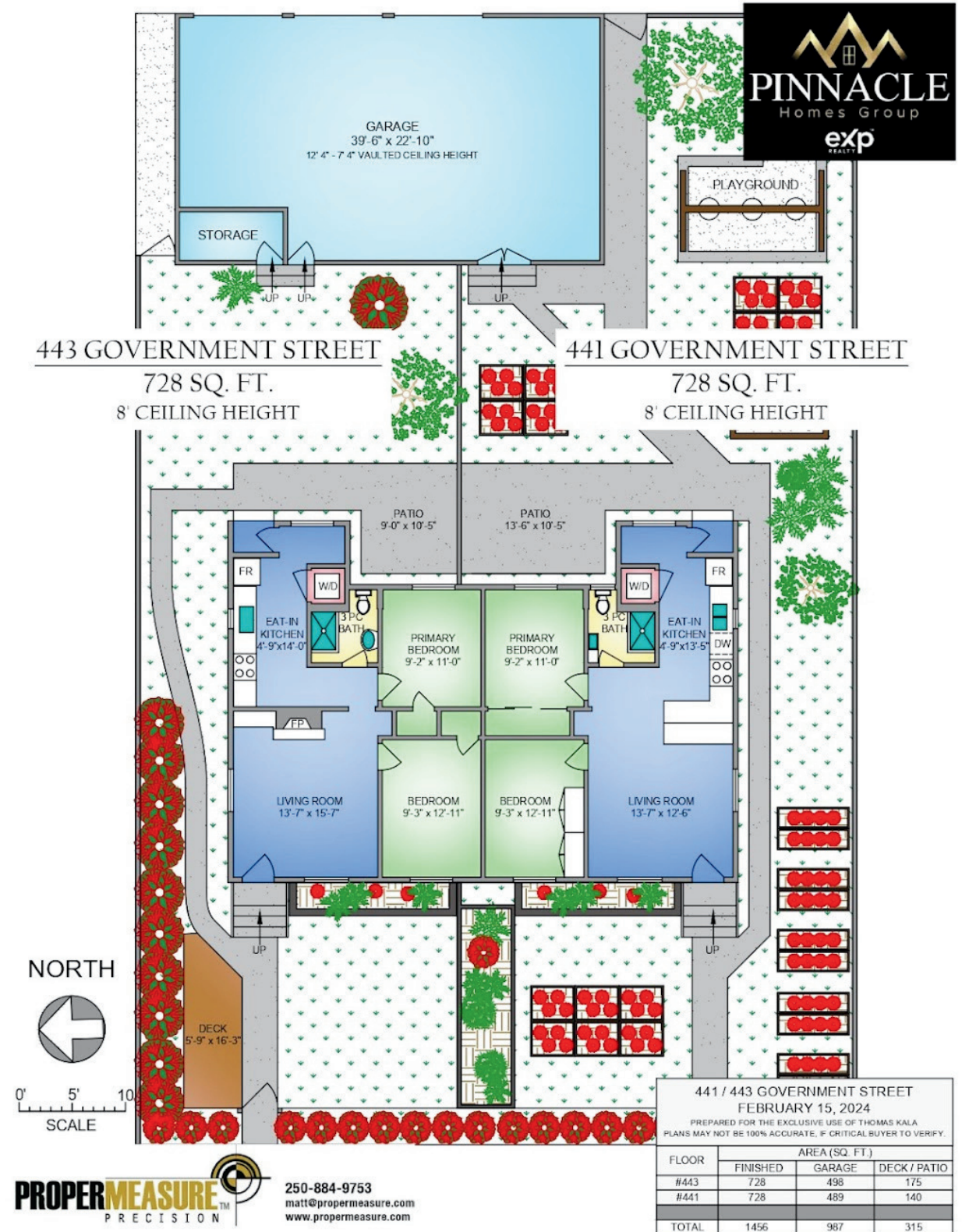
778-404-7668



Side by Side Duplex 4 Bed 2 Bath 728 sqft each side

Discover a meticulously designed side-by-side, purpose-built duplex nestled in the vibrant heart of James Bay. This prime location is merely steps away from the iconic Parliament buildings, the charming James Bay Village, the bustling Downtown Victoria, and the picturesque Inner Harbour. Each unit boasts two generously sized bedrooms and a bathroom, featuring polished hardwood floors and modernized bathrooms. Seize this exceptional chance to own an outstanding investment property in one of the city's most sought-after areas.

## Floor Plans



Thomas Kala\* Courtney Kala.  
\*Personal Real Estate Corporation

