



# 9215 KESTREL DRIVE

3 BED | 3 BATH | 2,792 SQ.FT.

[www.PinnacleHomesGroup.com](http://www.PinnacleHomesGroup.com)

778-404-7668

eXp Realty Luxury





## THE HOME

*3 BEDS / 3 BATHS*

Welcome to 9215 Kestrel Drive – a distinctive 2,792 sq. ft. Norse Log Home retreat designed to showcase the beauty of Lake Cowichan. Thoughtfully laid out across three levels, the main floor features soaring vaulted ceilings, a spacious living and dining area anchored by a wood-burning fireplace, and a bright kitchen with walk-in pantry. A bedroom and full bathroom on this level create a comfortable space for family or guests.

The upper level is dedicated to the primary retreat, offering a vaulted ceiling, walk-in closet, spa-inspired ensuite, and a loft-style landing ideal for a reading nook or home office. The lower level extends the living space with a large family room, an additional bedroom and bathroom, and direct access to a covered patio with hot tub – all oriented to capture the sweeping lake and mountain views.

Expansive wrap-around decks, multiple outdoor entertaining areas, and a 27' x 23' detached garage/workshop with its own bathroom complete this remarkable offering, blending rustic craftsmanship with modern comforts in a truly unique lakeside setting.

## THE FEATURES

This distinctive three-level Norse Log Home blends rustic character with modern comfort in a private lakeside setting. The main level showcases vaulted ceilings, a stone fireplace with insert, and a bright kitchen with walk-in pantry, alongside a bedroom and full bath. Upstairs, the primary retreat offers a spa-inspired ensuite, walk-in closet, and loft-style landing, while the lower level features a spacious family room, an additional bedroom and bath, and walk-out access to a covered patio with hot tub.

Extensive upgrades include a Lennox heat pump system, quartz vanities with Moen fixtures, custom blinds, new stainless steel appliances, and enhanced security with smart locks and cameras. Outdoors, wrap-around decks, rebuilt patios, slate steps, and landscaped retaining walls create multiple areas for entertaining. A detached oversized garage with skylights and space for a large boat completes this one-of-a-kind retreat, designed to capture sweeping views of Lake Cowichan.







## THE PRIMARY BEDROOM

The upper level is dedicated to a private primary retreat, designed as a serene escape with vaulted ceilings and expansive windows framing the lake and mountain views. A generous walk-in closet offers ample storage, while the spa-inspired ensuite features quartz vanity tops with Moen fixtures, a smart bidet toilet, and blackout window coverings for comfort and privacy. A loft-style landing just outside the suite provides the perfect space for a quiet reading nook or home office.

## THE KITCHEN

The bright and functional kitchen is designed to complement the home's rustic charm with modern convenience. A spacious walk-in pantry provides ample storage, while recent upgrades include sleek quartz countertops, Moen fixtures, and new stainless steel LG appliances—featuring an induction range, Smart Mirror InstaView refrigerator with water and ice dispenser, and a built-in microwave with pull-out fan. Large windows invite natural light and frame the surrounding lake and forest views, creating a warm and inviting space for everyday living or entertaining.

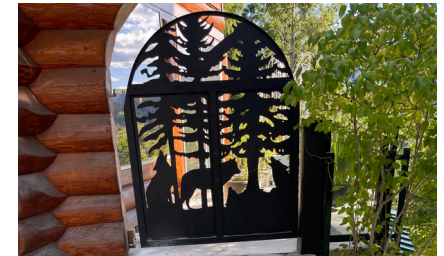






## THE GARAGE & WORKSHOP

An oversized 27' x 23' detached garage and workshop adds exceptional functionality to the property. Fully insulated and brightened by skylights, the space is designed to accommodate a large boat or multiple vehicles with ease. A roughed-in bathroom enhances its versatility, while smart locks and security features provide peace of mind. Whether used for storage, hobbies, or as a workspace, this garage and workshop offers the flexibility to suit a variety of lifestyles.



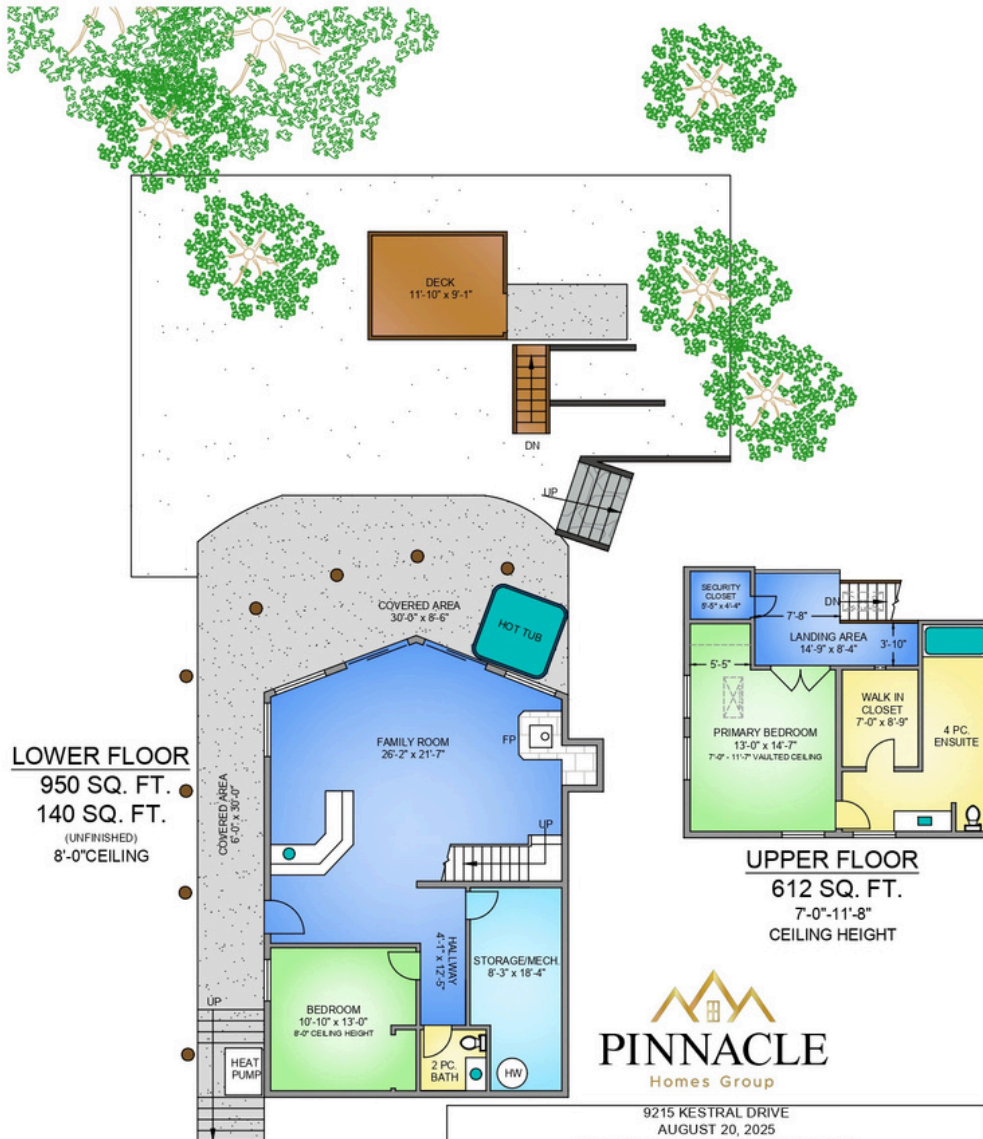
## BACKYARD

The backyard is designed for both relaxation and entertaining, with a slate patio framed by new retaining walls and custom landscaping. Multiple outdoor seating areas make the most of the sweeping lake and mountain views, while wrap-around decks extend the living space and connect seamlessly to the natural surroundings. A custom wood lodge offers practical storage for firewood, and rainwater collection systems provide eco-friendly utility. Whether enjoying the hot tub, hosting gatherings, or simply taking in the scenery, the backyard offers a private retreat that celebrates the beauty of Lake Cowichan. Exclusive access to a private sandy swimming beach Bayview Village Private Beach, Spring Beach, Nantree Beach, Sunset Beach and Stoker Park are only minutes away.

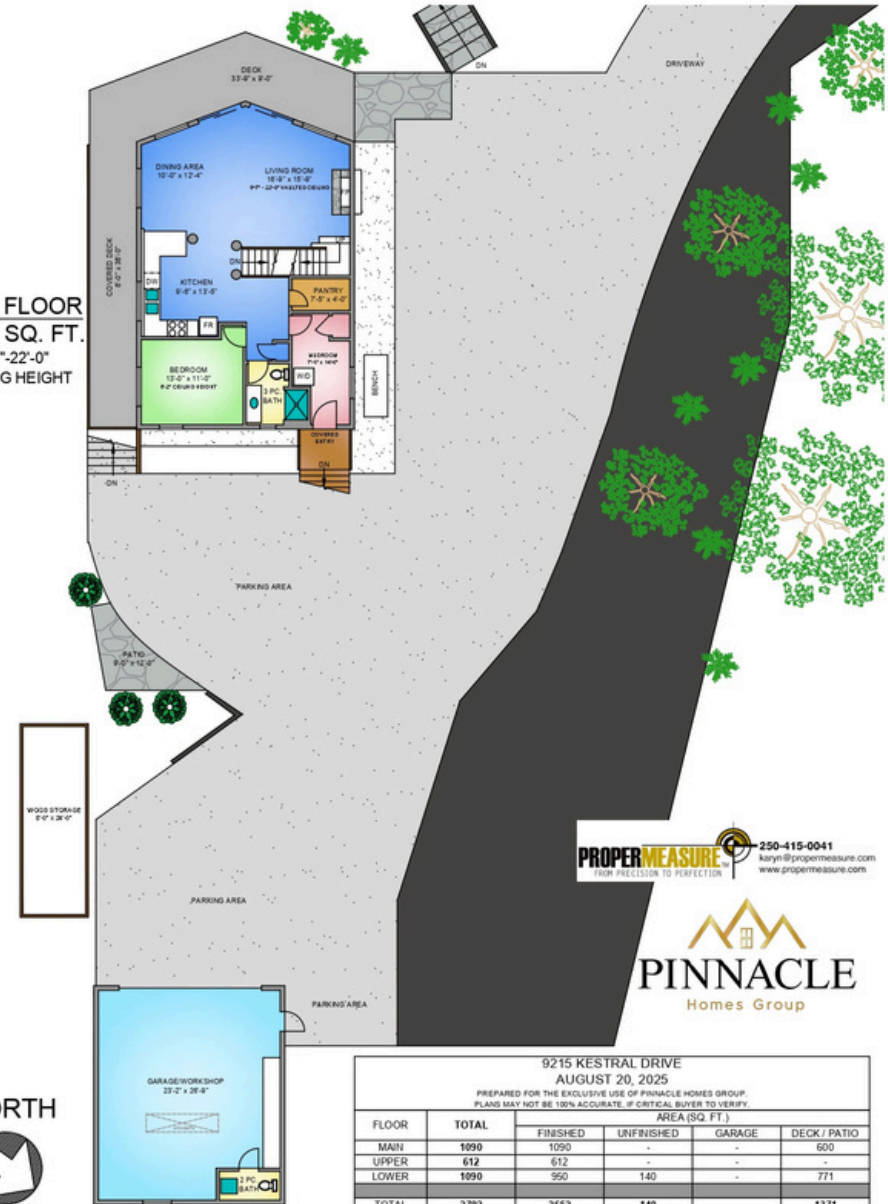




# THE FLOOR PLANS:



**MAIN FLOOR**  
1090 SQ. FT.  
9'-7"-22'-0" CEILING HEIGHT



NORTH

NORTH

**PROPERMEASURE**  
FROM PRECISION TO PERFECTION

250-415-0041  
karyn@propermeasure.com  
www.propermeasure.com

9215 KESTRAL DRIVE  
AUGUST 20, 2025

PREPARED FOR THE EXCLUSIVE USE OF PINNACLE HOMES GROUP.  
PLANS MAY NOT BE 100% ACCURATE. IF CRITICAL BUYER TO VERIFY.

FLOOR	TOTAL	AREA (SQ. FT.)			
		FINISHED	UNFINISHED	GARAGE	DECK / PATIO
MAIN	1090	1090	-	-	600
UPPER	612	612	-	-	-
LOWER	1090	950	140	-	771
TOTAL	2792	2652	140	-	1371
DET. GARAGE	680	-	-	680	-

**PROPERMEASURE**  
FROM PRECISION TO PERFECTION

250-415-0041  
karyn@propermeasure.com  
www.propermeasure.com

**PINNACLE**  
Homes Group

9215 KESTRAL DRIVE  
AUGUST 20, 2025

PREPARED FOR THE EXCLUSIVE USE OF PINNACLE HOMES GROUP.  
PLANS MAY NOT BE 100% ACCURATE. IF CRITICAL BUYER TO VERIFY.

FLOOR	TOTAL	AREA (SQ. FT.)			
		FINISHED	UNFINISHED	GARAGE	DECK / PATIO
MAIN	1090	1090	-	-	600
UPPER	612	612	-	-	-
LOWER	1090	950	140	-	771
TOTAL	2792	2652	140	-	1371
DET. GARAGE	680	-	-	680	-



# 9215 Kestrel Drive

AT A GLANCE...

BUILT: 2008

BEDROOMS: 3

BATHROOMS: 3

## INCLUDED ITEMS:

- LG Induction Range
- LG Smart Mirror InstaView Refrigerator with water/ice dispenser
- LG Stainless Steel Microwave
- LG Stainless Steel Dishwasher
- OVE Smart Bidet Toilet in Primary Ensuite
- Custom power blinds with Alexa integration (Living/Dining)
- Custom blackout blinds in Primary Bedroom & Ensuite
- Lorex 4K security cameras (9 units)
- Ring video camera
- Telus Smart Lock system on house and garage

## EXTERIOR HIGHLIGHTS:

- Slate patio with retaining wall
- Custom slate steps with wrought iron railings
- Complete concrete and aggregate paving throughout property
- Aggregate paving on lower deck
- Western Red Cedar soffits with integrated lighting
- Electric wrought iron driveway gate
- Custom wood lodge (24' x 8') for firewood storage
- Rainwater collection system: three 1,000L totes with pump + 50L barrel
- Expansive wrap-around decks with rebuilt front deck & new staircase

FINISHED AREA: 2,792 sq. ft.

LOT SIZE AREA: 0.64 Acres

WATER: Common Strata

WASTE: Common Strata

## INTERIOR HIGHLIGHTS:

- Lennox Heat Pump system
- Electric Baseboard Heat
- Wood Stove & Wood Fireplace
- Upgraded to 4-unit system with 62,000 BTUs
- 60-gallon hot water tank
- Vaulted ceilings and log craftsmanship throughout
- Stone fireplace with insert
- Maple Kitchen and Bathroom Cabinets
- Under counter Kitchen Lighting
- Quartz vanity tops with Moen fixtures in all bathrooms
- Stained cedar feature wall in lower level wet bar area
- New LED lighting and ceiling fan in main floor bedroom
- Two new custom chimneys + repaired stone chimney

## GARAGE & WORKSHOP:

- Oversized 27' x 23' detached garage/workshop
- Fully insulated with two skylights for natural light
- Roughed-in bathroom for added functionality
- Accommodates a large boat or multiple vehicles
- New exterior LED lanterns



## THE LOCATION *Lake Cowichan*

Nestled along the northern shores of Cowichan Lake—one of Vancouver Island’s largest and most picturesque freshwater lakes—this stunning home offers a lifestyle defined by recreation and relaxation. Residents enjoy endless outdoor activities right at their doorstep, including boating, fishing, kayaking, paddleboarding, swimming, hiking, and mountain biking, with multiple golf courses just minutes away.

The surrounding Cowichan Valley is celebrated for its sun-drenched climate, tranquil landscapes, and year-round opportunities for adventure, whether on the water or exploring nearby forest trails. A short drive brings you to the town of Lake Cowichan, where you’ll find shops, schools, dining, and essential services, all while preserving small-town charm. Located close to the Cowichan Valley Hospital that is almost completed.

With breathtaking lake views, abundant wildlife, and a welcoming community spirit, the north shore of Cowichan Lake is a sought-after destination for both year-round living and vacation retreats.







Thomas Kala\* & Courtney Kala\*  
\*Personal Real Estate Corporation  
Pinnacle Homes Group

eXp Realty

778-404-7668

Thomas@pinnaclehomesgroup.com  
Courtney@pinnaclehomesgroup.com

Not intended to solicit properties currently listed for sale or individuals currently under contract with a Brokerage. This information is from sources which we deem reliable, but must be verified