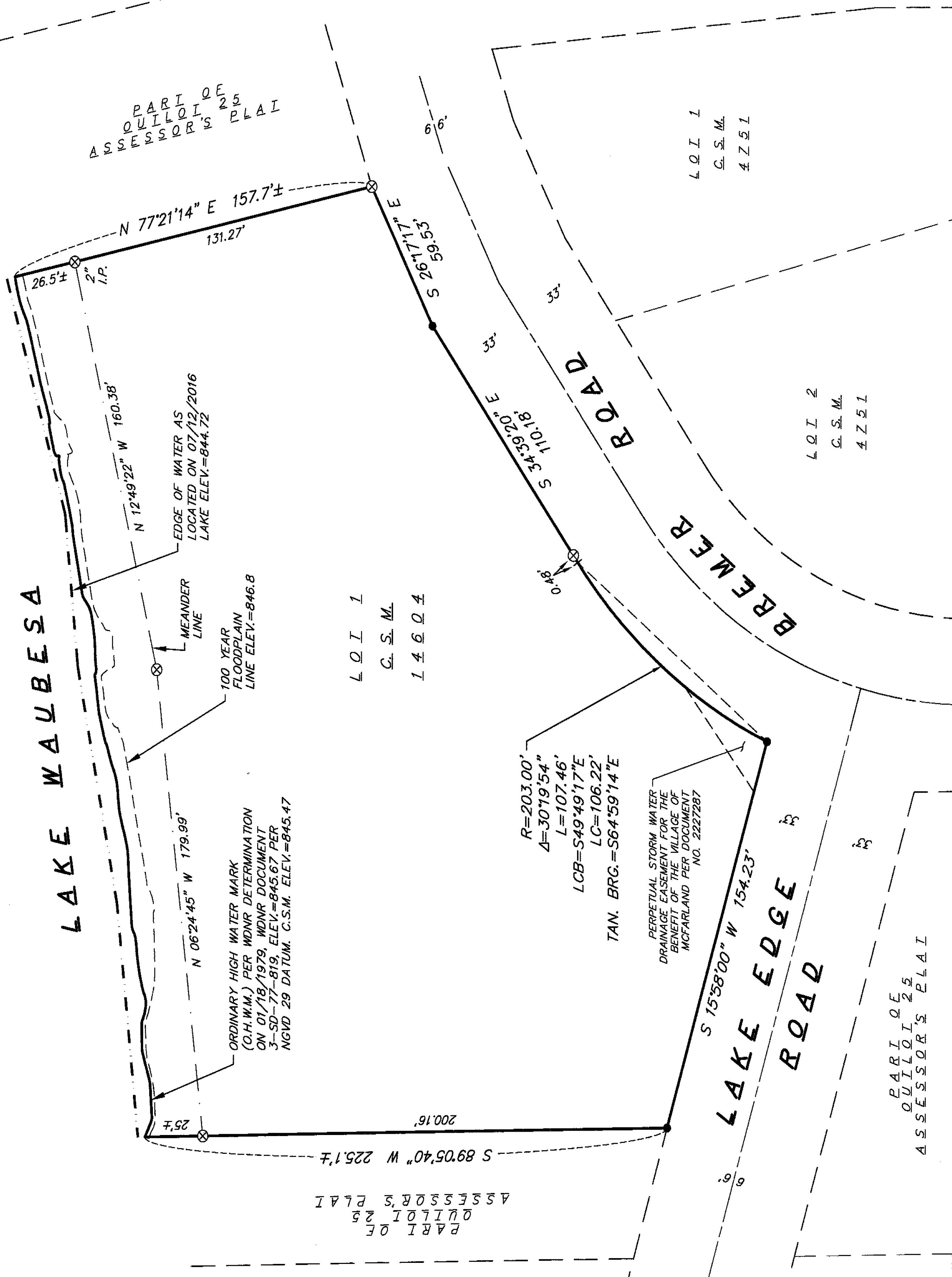


# WAUBESA SHORES CONDOMINIUMS, A CONDOMINIUM PLAT

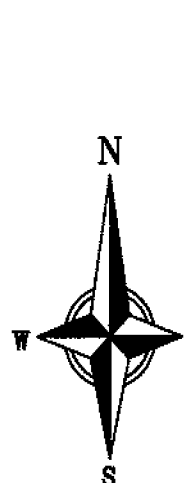
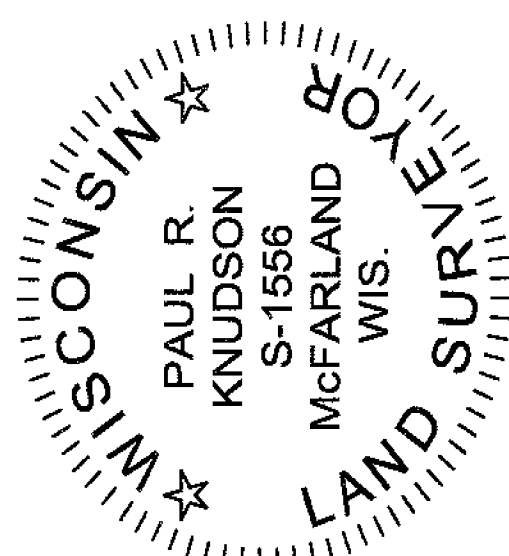
LOT 1, CERTIFIED SURVEY MAP NUMBER 14604, AS RECORDED IN VOLUME 101 OF CERTIFIED SURVEY MAPS, ON PAGES 99-105, AS DOCUMENT NUMBER 5357398, DANE COUNTY REGISTRY, VILLAGE OF MCFARLAND, DANE COUNTY, WISCONSIN.



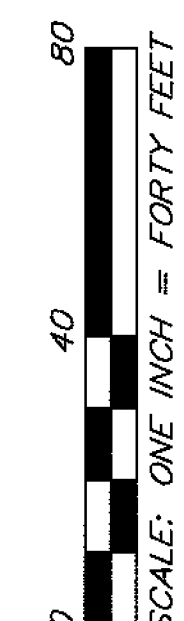
**LEGAL DESCRIPTION:**  
 Lot 1, Certified Survey Map Number 14604, as recorded in Volume 101 of Certified Survey Maps, on Pages 99-105, as Document Number 5357398, Dane County Registry, Located in Government Lot 1, the Fractional NW 1/4 of the NW 1/4 of Section 3, Township 06 North, Range 10 East, Village of McFarland, Dane County, Wisconsin. Containing 78,125 square feet or 1.79 acres more or less to the ordinary high water mark.

**SURVEYOR'S CERTIFICATE:**  
 I, Paul R. Knudson, Professional Land Surveyor No. 1556, hereby certify, that in full compliance with the provisions of Chapter 703 of the Wisconsin Statutes, Dane County's Subdivision Regulations and the Village of McFarland's ordinance requirements regarding condominium plat review, I have surveyed and mapped the above described lands in accordance with the information furnished; I further certify that this condominium plat correctly represents the condominium plat as constructed; the identification and location of the lots, the common elements and limited common elements can be determined from the condominium plat.  
 Vierbicher Associates Inc.  
 By: Paul R. Knudson

Dated this 15th day of November, 2017  
 Signed: *Paul R. Knudson*  
 Paul R. Knudson, P.L.S. No. 1556



BEARINGS ARE REFERENCED TO CERTIFIED SURVEY MAP NUMBER 14604



**LEGEND**  
 ● FOUND 3/4" Ø IRON ROD  
 ⊗ FOUND 1-1/2" Ø IRON PIPE (I.P.) (UNLESS NOTED OTHERWISE)

**PREPARED FOR:**  
 Beach House Properties, LLC  
 5020 Voges Road  
 Madison, WI 53718

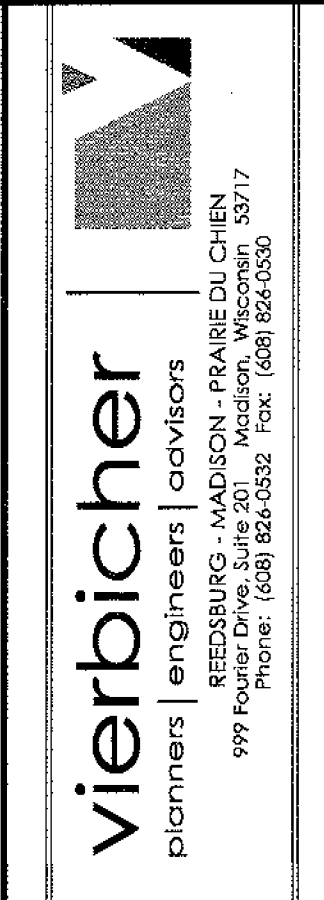
**PREPARED BY:**  
 Vierbicher Associates, Inc.  
 By: Paul R. Knudson  
 999 Fourier Drive,  
 Suite 201  
 Madison, WI 53717  
 (608) 826-0532  
 pkn@vierbicher.com

Drafted by: MZIE  
 Checked by: PKN  
 Date: 11/15/2017  
 FN: 150252  
 Sheet 1 of 11

**DANE COUNTY APPROVAL CERTIFICATE**  
 There are no objections to this condominium or condominium amendment with respect to Sec. 703 Wisconsin Statutes and it is hereby approved for recording.

Date: December 1, 2017  
*C. Deery*  
 Dane County Planning & Development

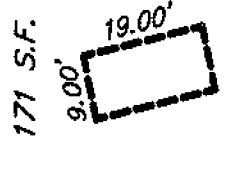
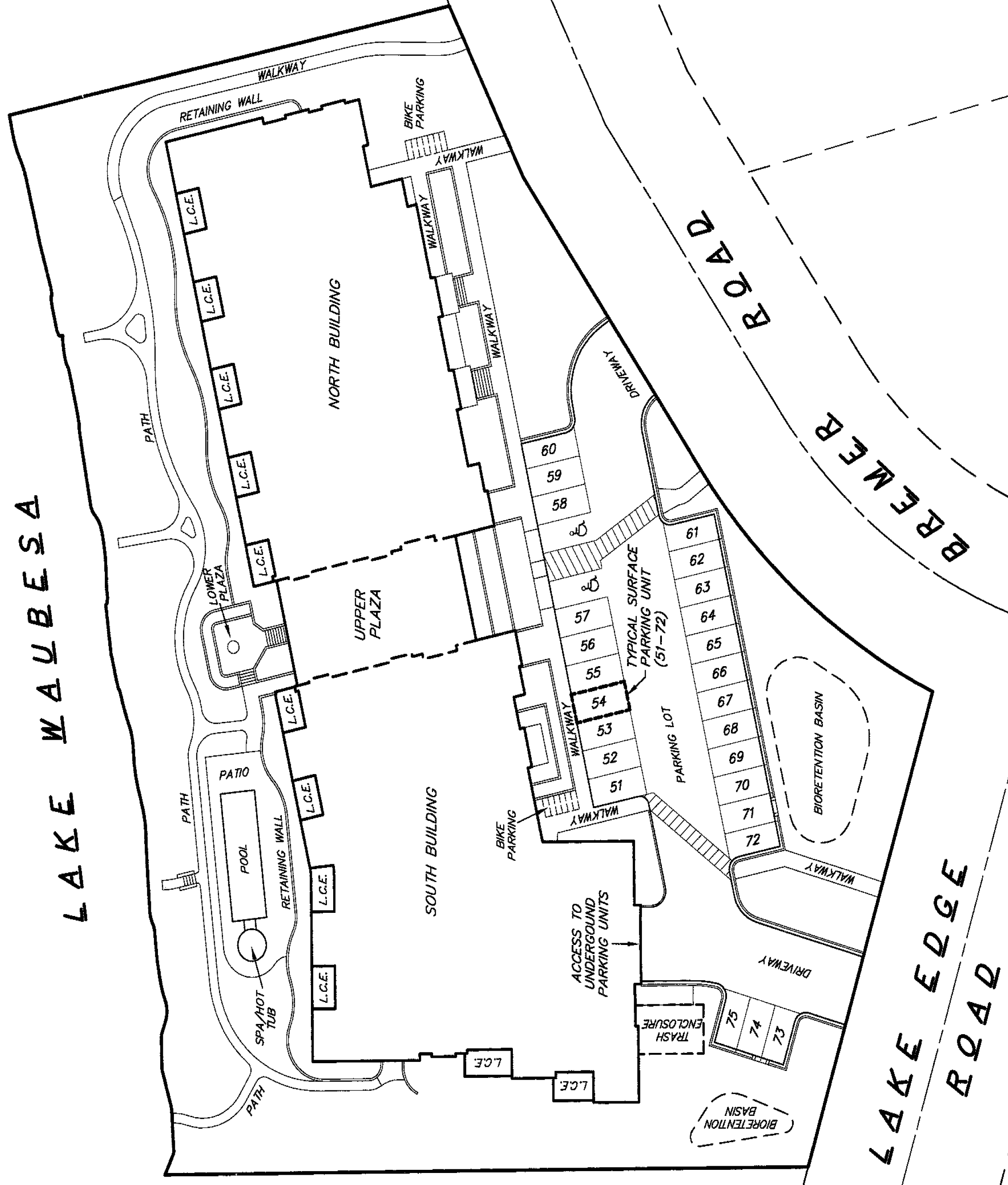
**CERTIFICATE OF REGISTER OF DEEDS**  
 Received for recording this 7th day of December, 2017, at 3:13 o'clock P.M. and recorded in Volume 7-0608 of Condominium Plats on Pages 1-11 as Document Number 5376833  
 Konstantinowski by  
 Kristina Konstantinowski, Deputy  
 Dane County Register of Deeds



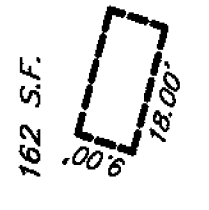
# WAUBESA SHORES CONDOMINIUMS, A CONDOMINIUM PLAT

LOT 1, CERTIFIED SURVEY MAP NUMBER 14604, AS RECORDED IN VOLUME 101 OF CERTIFIED SURVEY MAPS, ON PAGES 99-105, AS DOCUMENT NUMBER 5357398, DANE COUNTY REGISTRY, VILLAGE OF McFARLAND, DANE COUNTY, WISCONSIN.

## LAKE WAUBESA



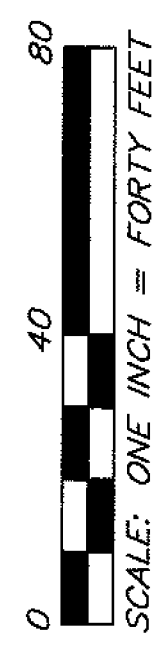
SURFACE PARKING UNIT DETAIL  
51-72  
1"=40'



SURFACE PARKING UNIT DETAIL  
73-75  
1"=40'



BEARINGS ARE REFERENCED TO CERTIFIED SURVEY MAP NUMBER 14604



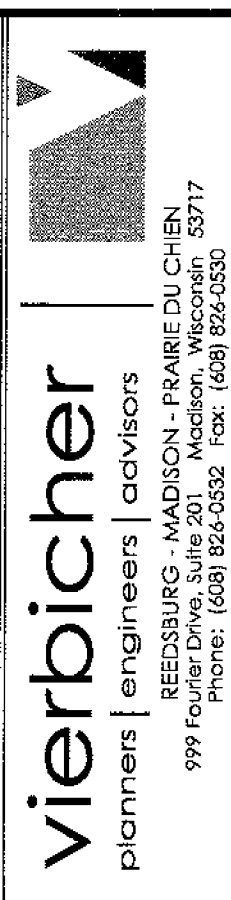
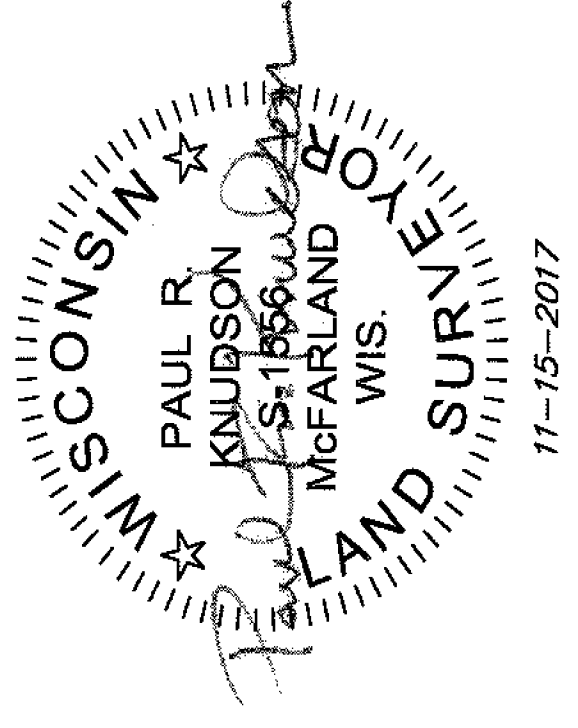
### LEGEND

- LIMITED COMMON ELEMENT (L.C.E.)
- NOTES:
  - EVERYTHING OUTSIDE OF THE UNITS, PARKING UNITS, AND STORAGE UNITS WHICH ARE NOT DESIGNATED AS LIMITED COMMON ELEMENTS (L.C.E.) CONSTITUTE COMMON ELEMENTS (C.E.).
  - SURFACE PARKING UNITS ARE DESIGNATED AS 51-75.

**PREPARED FOR:**  
Beach House Properties, LLC  
5020 Voges Road  
Madison, WI 53718

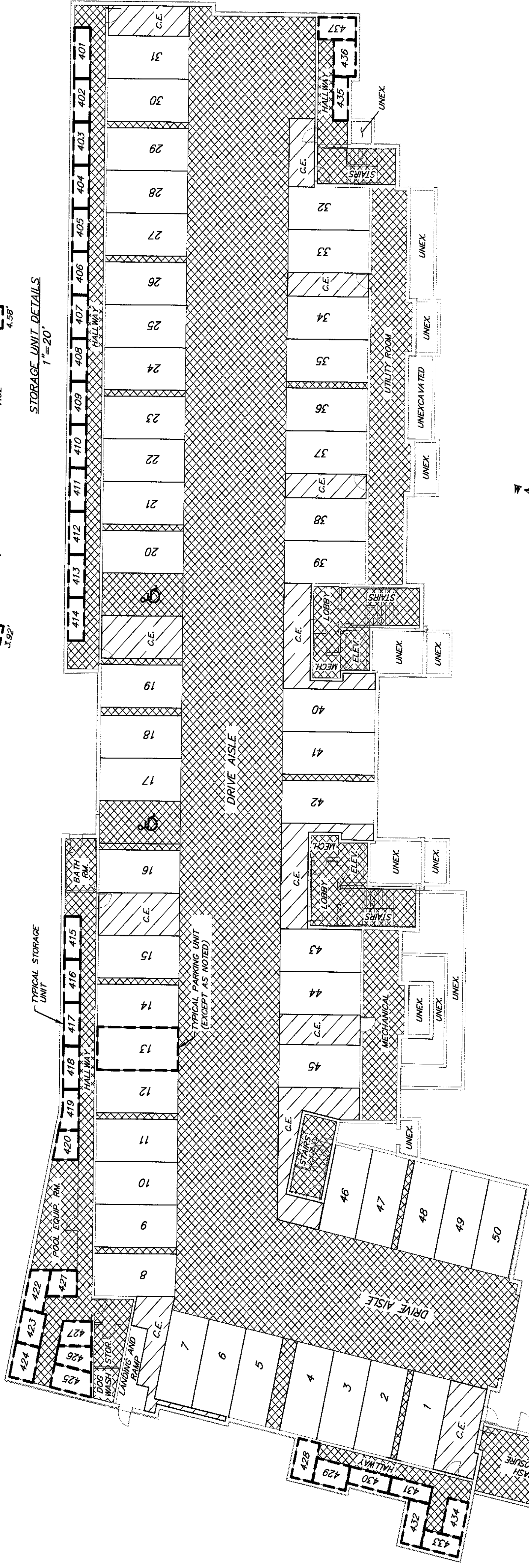
**PREPARED BY:**  
Vierbicher Associates, Inc.  
By: Paul R. Knudson  
999 Fourrier Drive,  
Suite 201  
Madison, WI 53717  
(608) 826-0532  
pknu@vierbicher.com

Drafted by: MZIE  
Checked by: PKNU  
Date: 11/15/2017  
FN: 150252  
Sheet 2 of 11

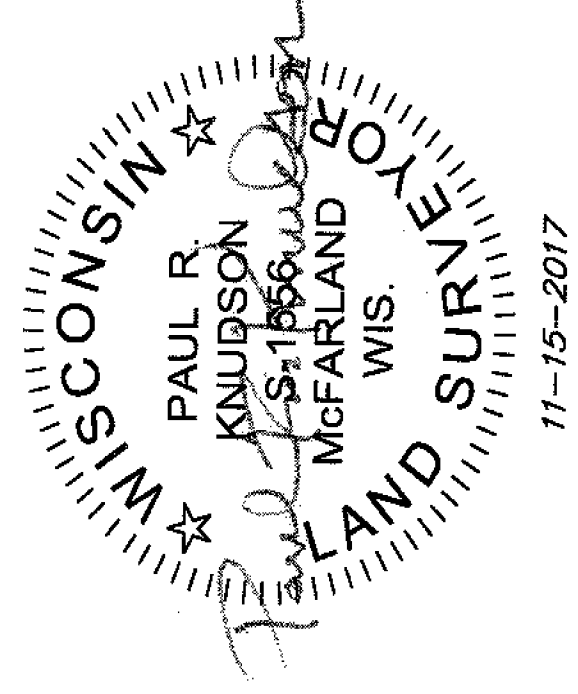


# WAUBESA SHORES CONDOMINIUMS, A CONDOMINIUM PLAT

LOT 1, CERTIFIED SURVEY MAP NUMBER 14604, AS RECORDED IN VOLUME 101 OF CERTIFIED SURVEY MAPS, ON PAGES 99-105, AS DOCUMENT NUMBER 5357398, DANE COUNTY REGISTRY, VILLAGE OF MCFARLAND, DANE COUNTY, WISCONSIN.

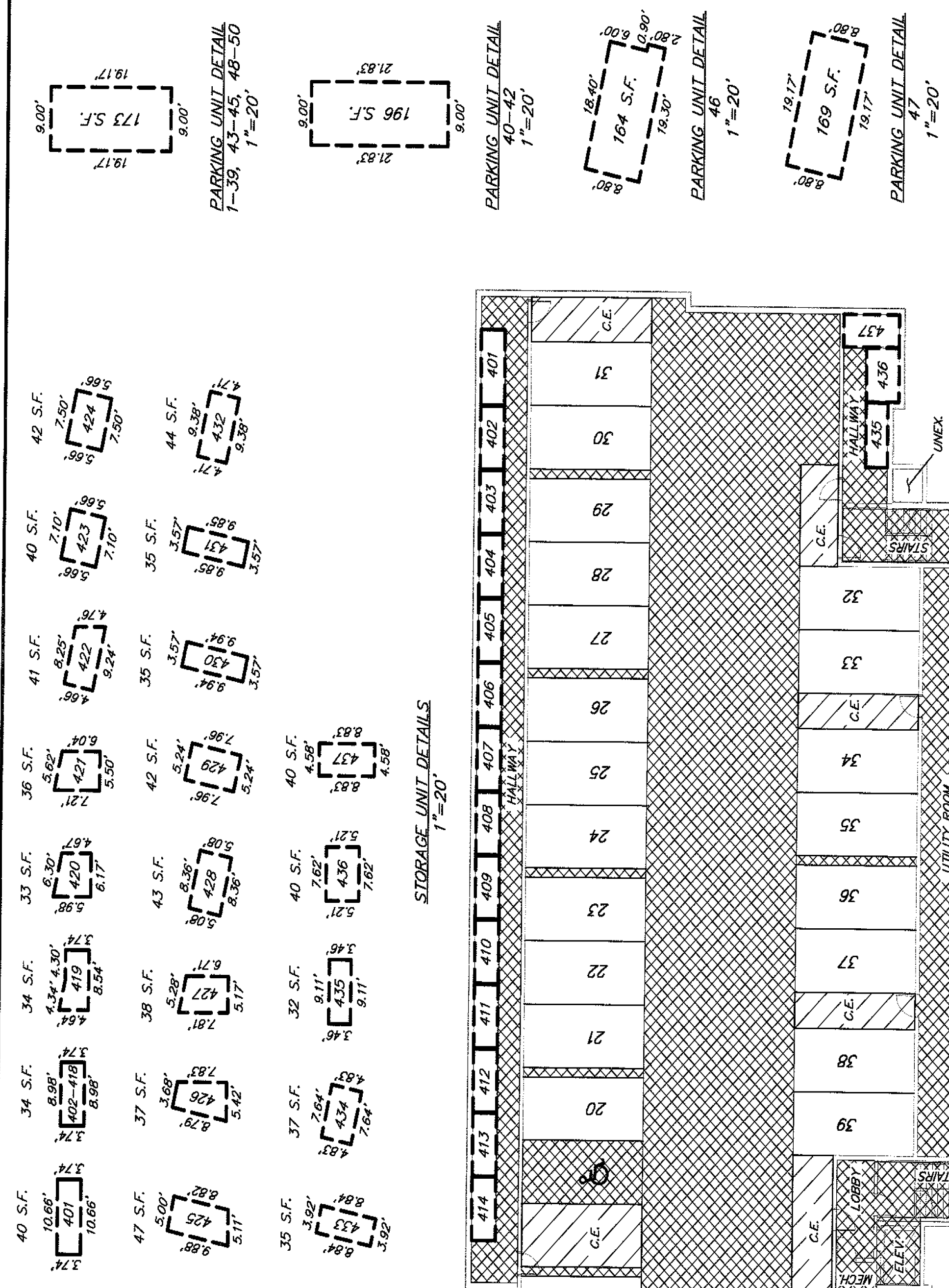


**GARAGE FLOOR PLAN**  
1"=20'



**LEGEND**  
 COMMON ELEMENT (C.E.)  
 NO PARKING

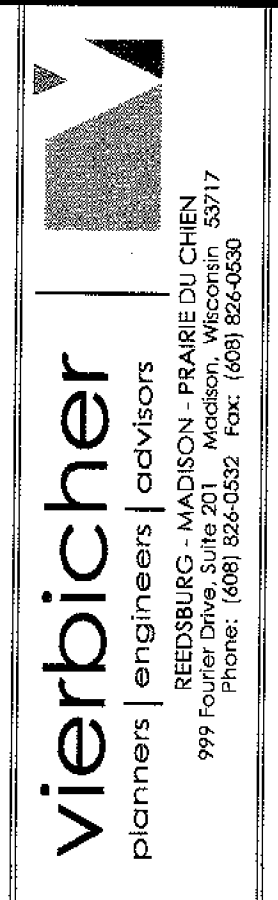
- Notes:**
- 1) The parking unit and storage unit dimensions and areas shown on this condominium plat are approximate and do not supersede the parking unit and storage unit boundaries as set forth in the condominium declaration.
  - 2) The floor plans shown hereon are approximate and are based on drawings provided by the Architect.
  - 3) Underground parking units are designated as 1-50. Storage units are designated as 401-437.



**PREPARED FOR:**  
Beach House Properties, LLC  
5020 Voges Road  
Madison, WI 53718

**PREPARED BY:**  
Vierbicher Associates, Inc.  
By: Paul R. Knudson  
999 Fuller Drive, Suite 201  
Madison, WI 53717  
(608) 826-0532  
pknu@vierbicher.com

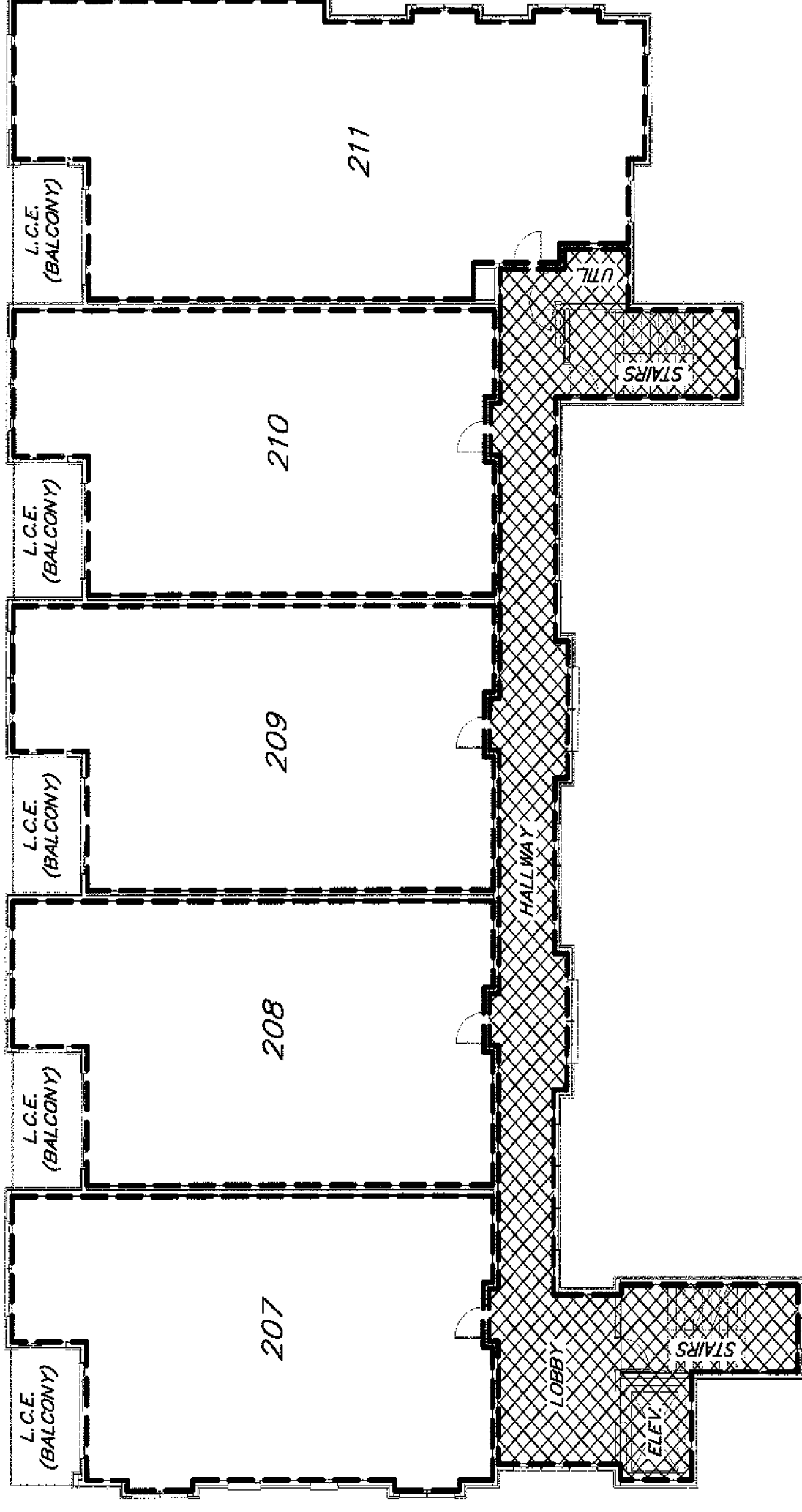
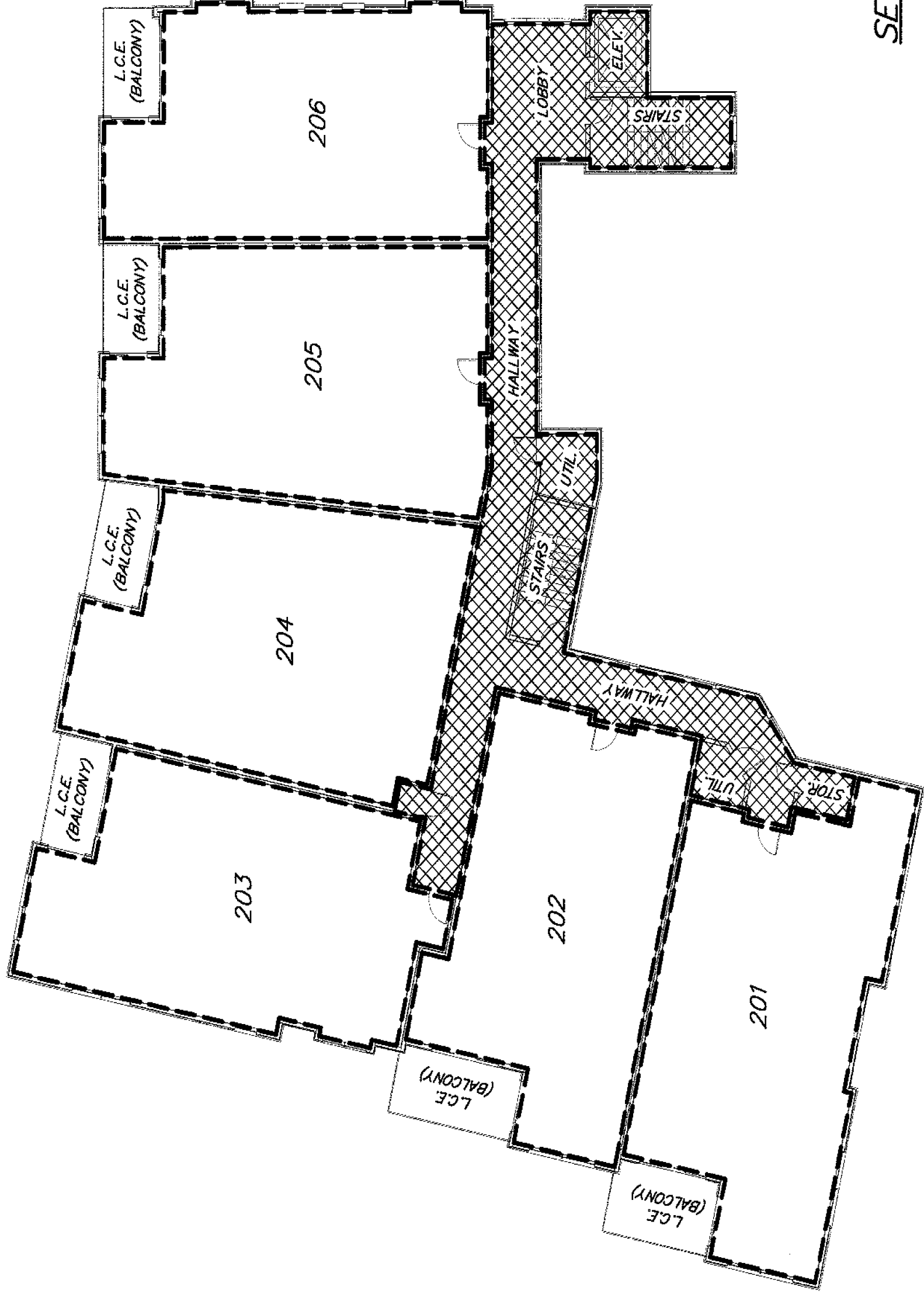
Drafted by: MZIE  
Checked by: PKNU  
Date: 11/15/2017  
PN: 150252  
Sheet 3 of 11



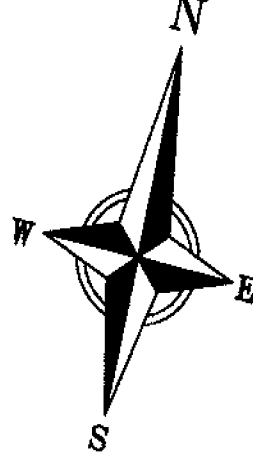


# WAUBESA SHORES CONDOMINIUMS, A CONDOMINIUM PLAT

LOT 1, CERTIFIED SURVEY MAP NUMBER 14604, AS RECORDED IN VOLUME 101 OF  
CERTIFIED SURVEY MAPS, ON PAGES 99-105, AS DOCUMENT NUMBER 5357398,  
DANE COUNTY REGISTRY, VILLAGE OF MCFARLAND, DANE COUNTY, WISCONSIN.

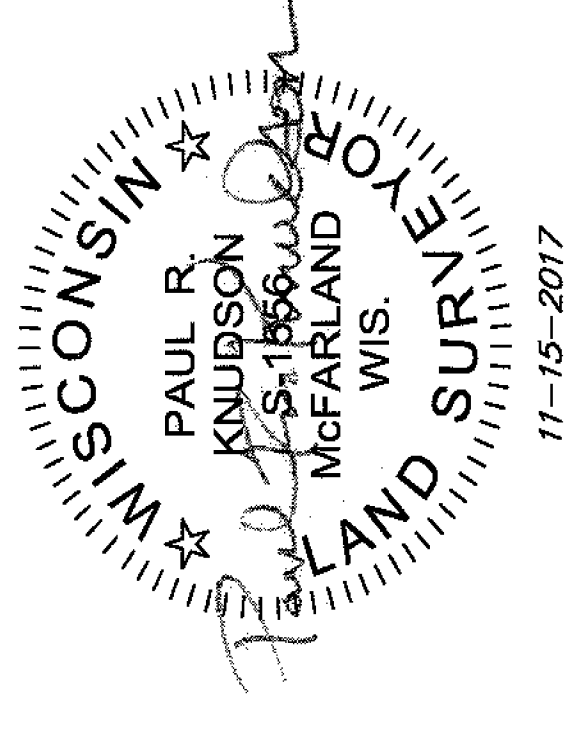


SECOND FLOOR PLAN  
1"=20'



**LEGEND**  
COMMON ELEMENT (C.E.)

**Note:**  
1) The floor plans shown hereon are approximate  
and are based on drawings provided by the  
Architect.



**PREPARED FOR:**  
Beach House Properties, LLC  
5020 Voges Road  
Madison, WI 53718

**PREPARED BY:**  
Vierbicher Associates, Inc.  
By: Paul R. Knudson  
999 Fourier Drive,  
Suite 201  
Madison, WI 53717  
(608) 826-0532  
pknu@vierbicher.com

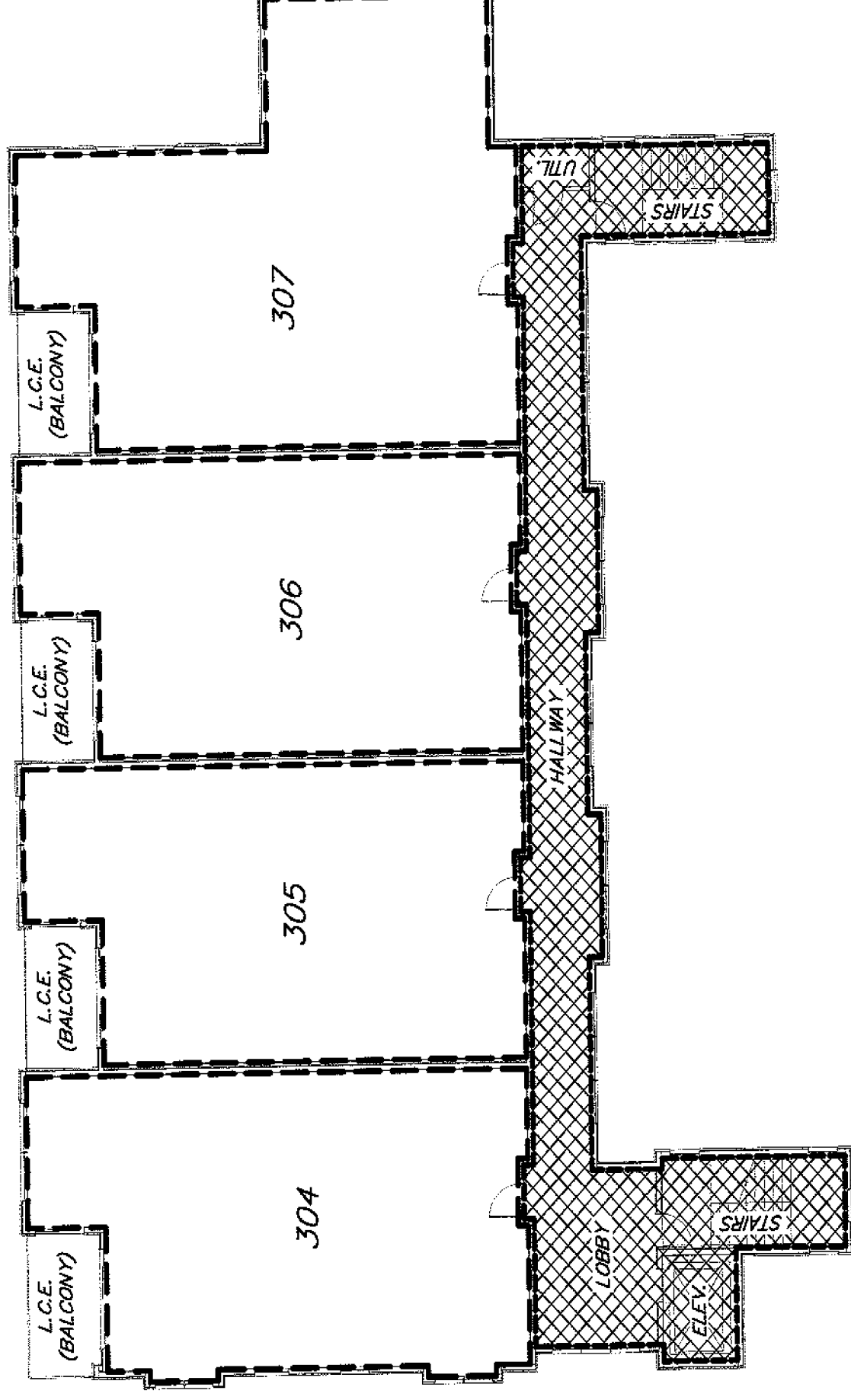
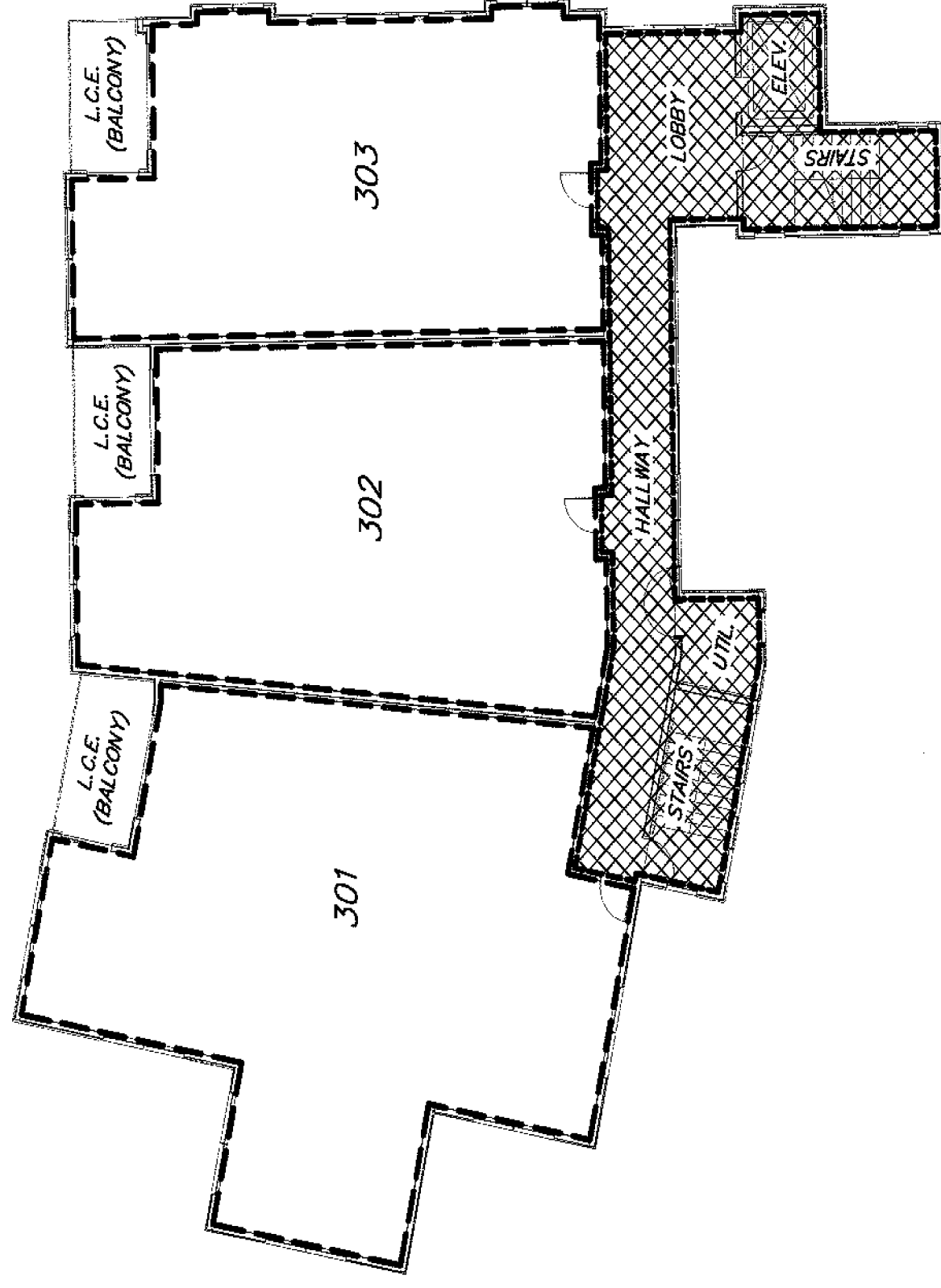
Drafted by: MZIE  
Checked by: PKNU  
Date: 11/15/2017  
FN: 150252  
Sheet 5 of 11

**vierbicher**  
planners | engineers | advisors

1035 SCENIC DRIVE SUITE 201  
MADISON, WISCONSIN 53717  
PHONE: (608) 824-0532 FAX: (608) 824-0530

# WAUBESA SHORES CONDOMINIUMS, A CONDOMINIUM PLAT

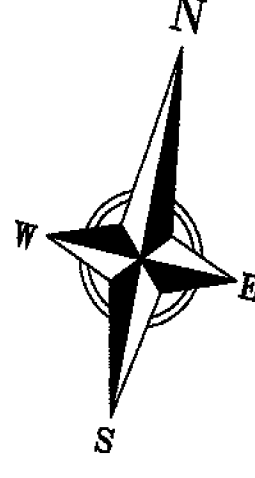
LOT 1, CERTIFIED SURVEY MAP NUMBER 14604, AS RECORDED IN VOLUME 101 OF  
CERTIFIED SURVEY MAPS, ON PAGES 99-105, AS DOCUMENT NUMBER 5357398,  
DANE COUNTY REGISTRY, VILLAGE OF McFARLAND, DANE COUNTY, WISCONSIN.



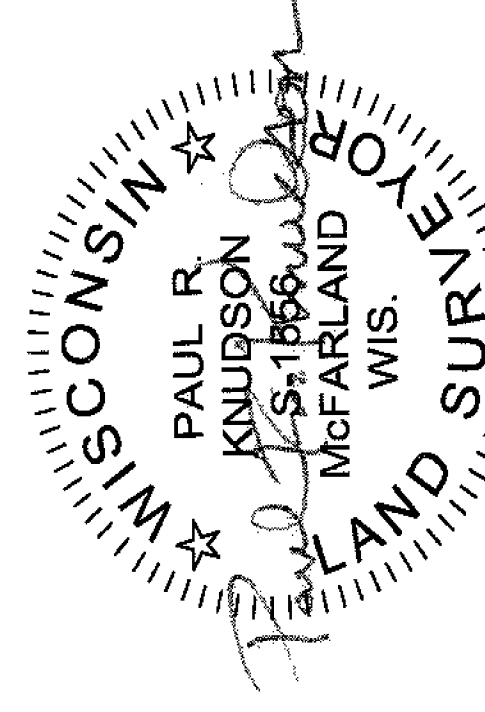
**Notes:**

- 1) The floor plans shown hereon are approximate and are based on drawings provided by the Architect.

**THIRD FLOOR PLAN**  
1"=20'



**LEGEND**  
 COMMON ELEMENT (C.E.)

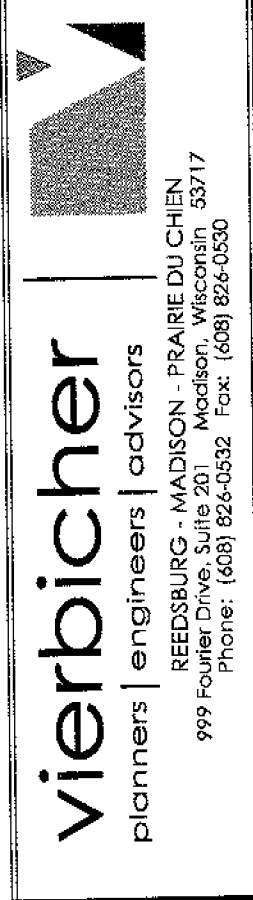


11-15-2017

**PREPARED FOR:**  
Beach House Properties, LLC  
5020 Veves Road  
Madison, WI 53718

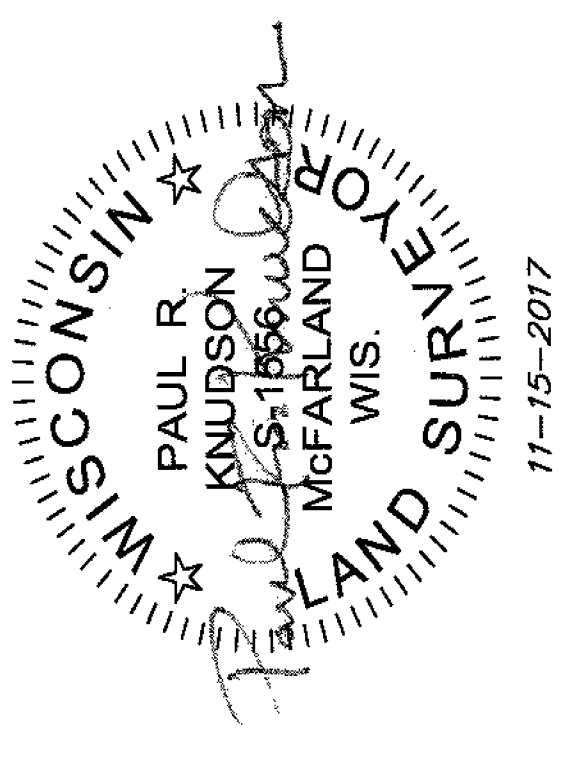
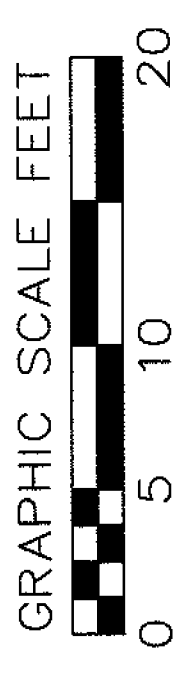
**PREPARED BY:**  
Vierbicher Associates, Inc.  
By: Paul R. Knudson  
999 Fourier Drive,  
Suite 201  
Madison, WI 53717  
(608) 826-0532  
pknu@vierbicher.com

Drafted by: MZIE  
Checked by: PKNU  
Date: 11/15/2017  
FN: 150252  
Sheet 6 of 11



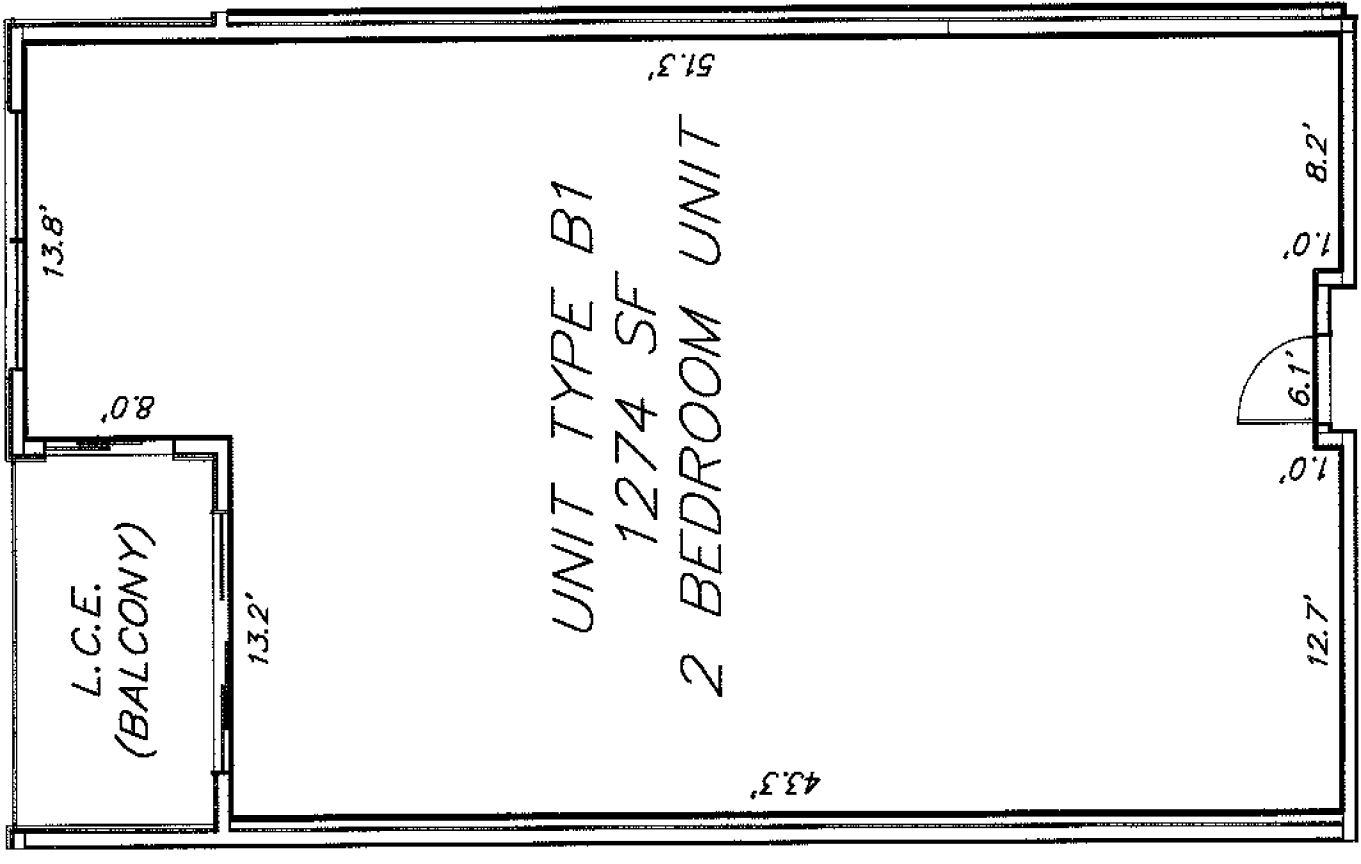
# WAUBESA SHORES CONDOMINIUMS, A CONDOMINIUM PLAT

LOT 1, CERTIFIED SURVEY MAP NUMBER 14604, AS RECORDED IN VOLUME 101 OF  
CERTIFIED SURVEY MAPS, ON PAGES 99-105, AS DOCUMENT NUMBER 5357398,  
DANE COUNTY REGISTRY, VILLAGE OF McFARLAND, DANE COUNTY, WISCONSIN.

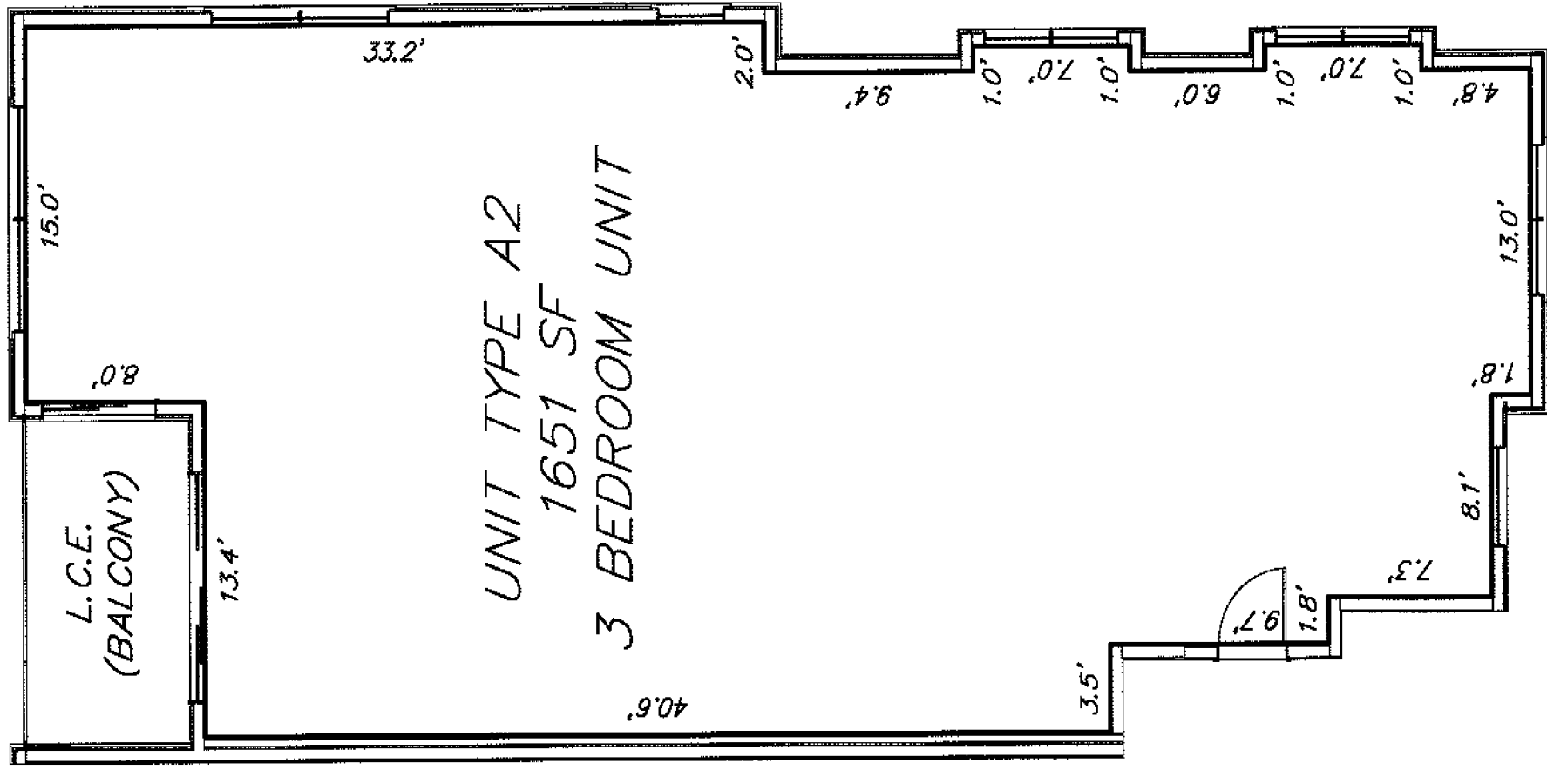


**Notes:**

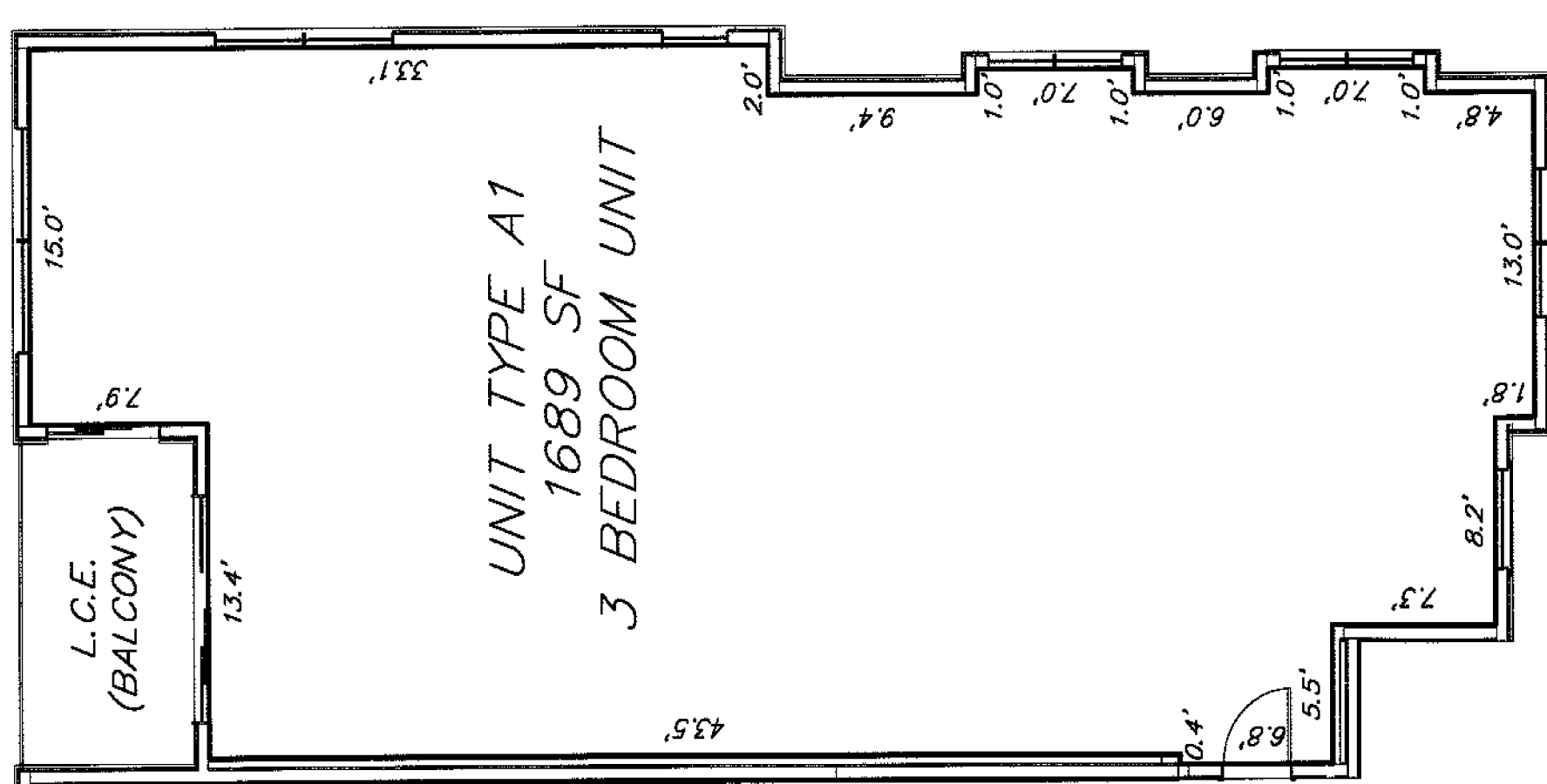
- 1) The Unit dimensions and Unit areas shown on this condominium plat are approximate and do not supersede the Unit boundaries as set forth in the condominium declaration.
- 2) The Unit floor plans shown hereon are approximate and are based on drawings provided by the Architect.
- 3) All balconies attached to the Units shown hereon are Limited Common Element (L.C.E.) and are appurtenant to their respective residential Unit.



- UNIT 108
- UNIT 109
- UNIT 110
- UNIT 208
- UNIT 209
- UNIT 210
- UNIT 305
- UNIT 306



UNIT 211

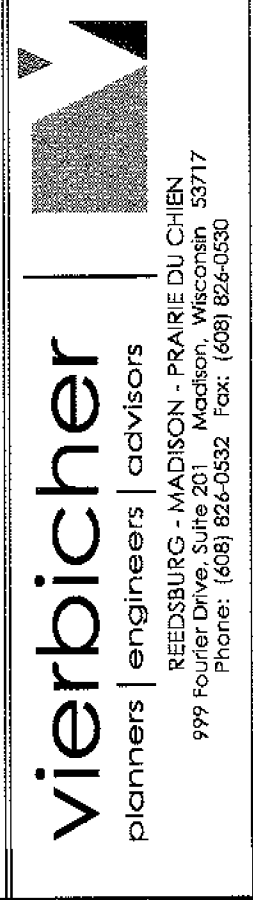


UNIT 111

**PREPARED FOR:**  
Beach House Properties, LLC  
5020 Voges Road  
Madison, WI 53718

**PREPARED BY:**  
Vierbicher Associates, Inc.  
By: Paul R. Knudson  
999 Fourier Drive,  
Suite 201  
Madison, WI 53717  
(608) 826-0532  
pknu@vierbicher.com

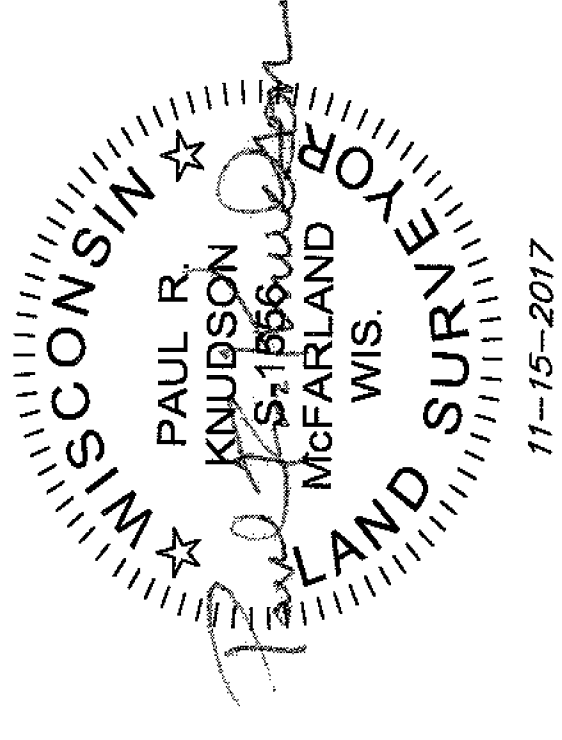
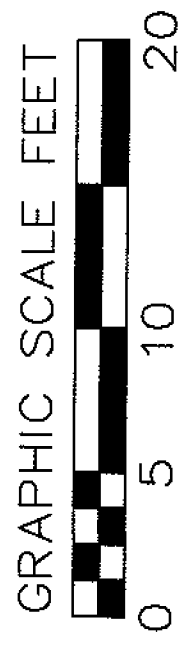
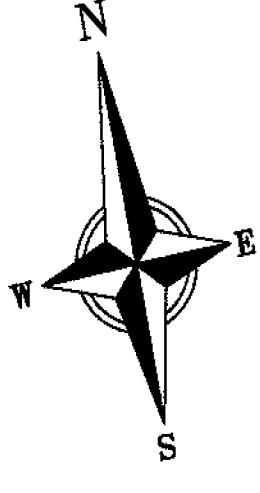
Drafted by: SCHR  
Checked by: PKNU  
Date: 11/15/2017  
FN: 150252  
Sheet 7 of 11





**WAUBESA SHORES CONDOMINIUMS,  
A CONDOMINIUM PLAT**

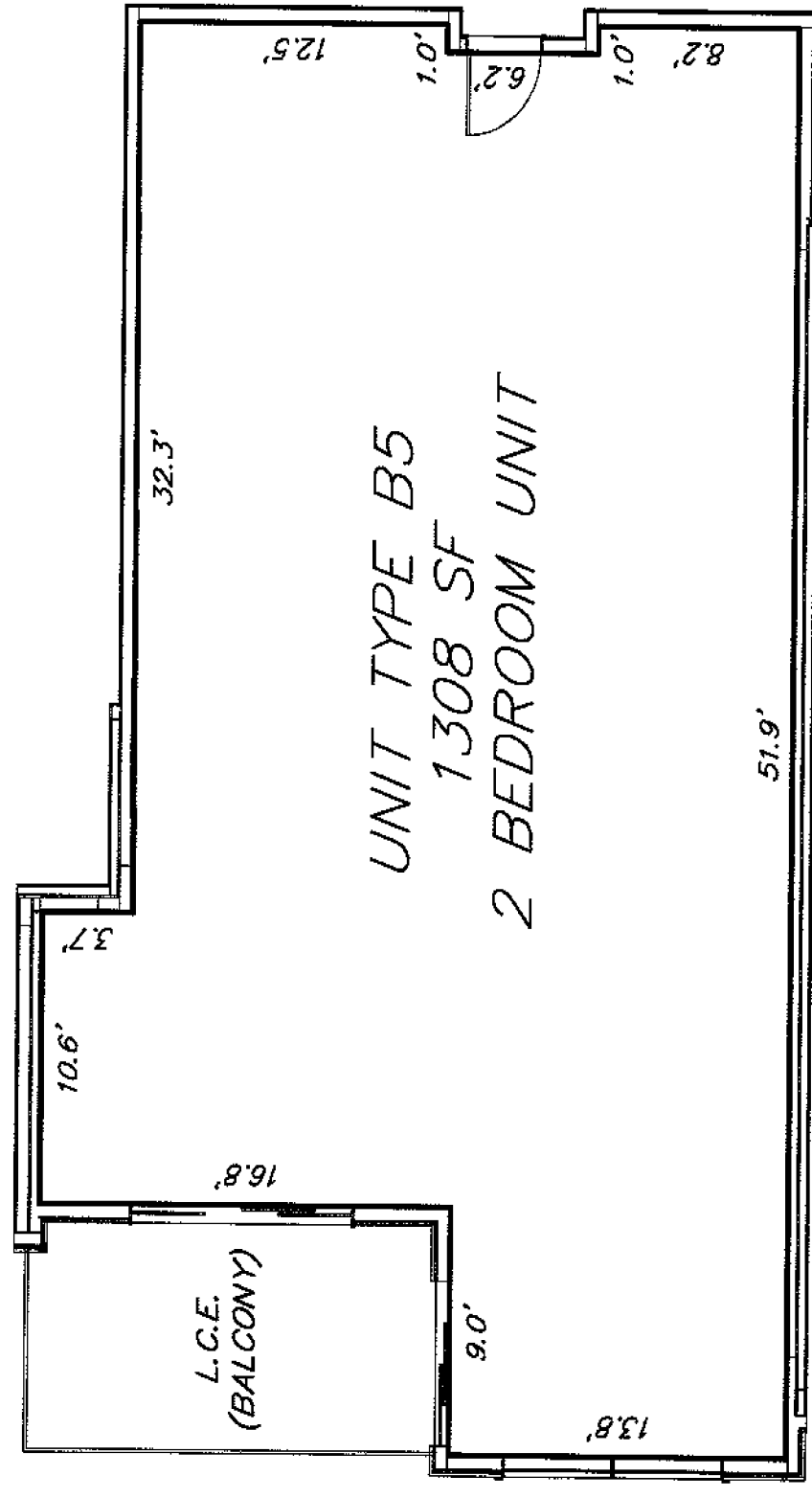
LOT 1, CERTIFIED SURVEY MAP NUMBER 14604, AS RECORDED IN VOLUME 101 OF  
CERTIFIED SURVEY MAPS, ON PAGES 99-105, AS DOCUMENT NUMBER 5357398,  
DANE COUNTY REGISTRY, VILLAGE OF McFARLAND, DANE COUNTY, WISCONSIN.



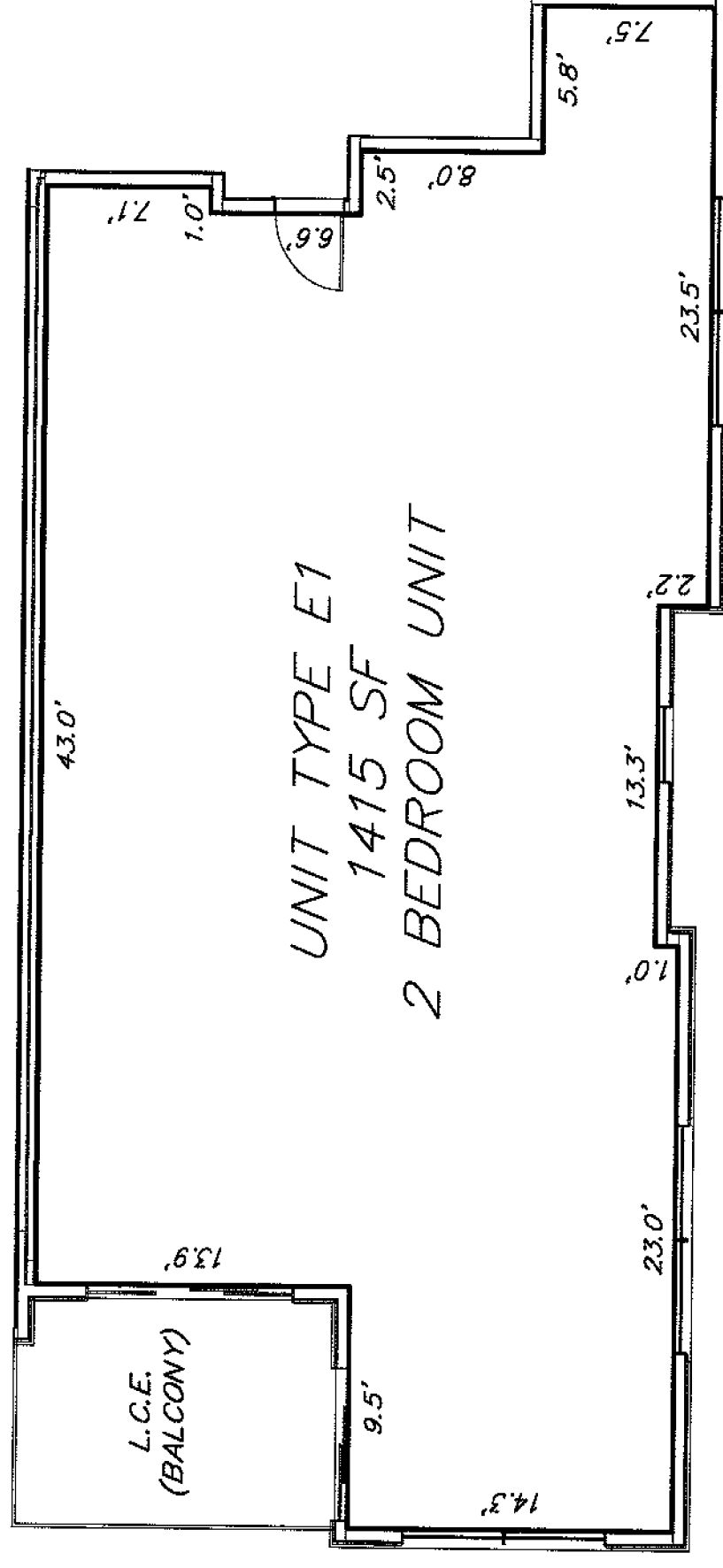
11-15-2017

**Notes:**

- 1) The Unit dimensions and Unit areas shown on this condominium plat are approximate and do not supersede the Unit boundaries as set forth in the condominium declaration.
- 2) The Unit floor plans shown hereon are approximate and are based on drawings provided by the Architect.
- 3) All balconies attached to the Units shown hereon are Limited Common Element (L.C.E.) and are appurtenant to their respective residential Unit.



UNIT 102  
UNIT 202

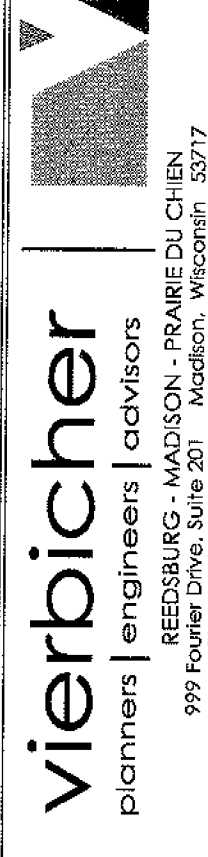


UNIT 101  
UNIT 201

**PREPARED FOR:**  
Beach House Properties, LLC  
5020 Veges Road  
Madison, WI 53718

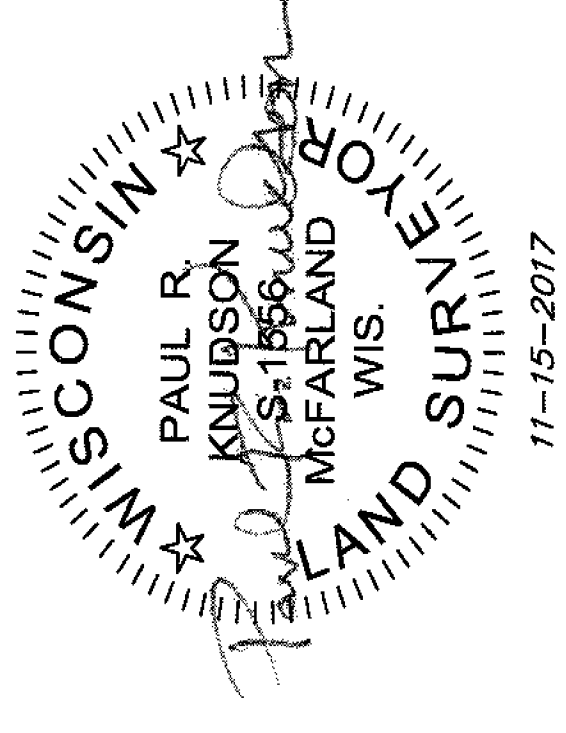
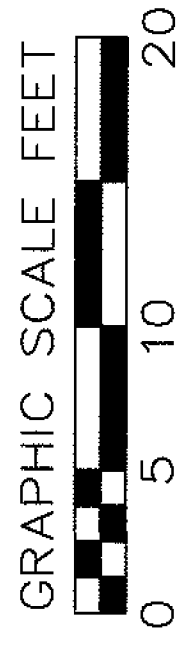
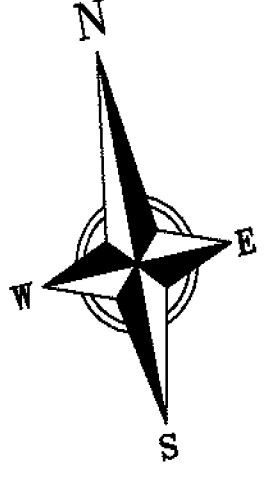
**PREPARED BY:**  
Vierbicher Associates, Inc.  
By: Paul R. Knudson  
999 Fourier Drive,  
Suite 201  
Madison, WI 53717  
(608) 826-0532  
pknu@vierbicher.com

Drafted by: SCHR  
Checked by: PKNU  
Date: 11/15/2017  
FN: 150252  
Sheet 9 of 11



**WAUBESA SHORES CONDOMINIUMS,  
A CONDOMINIUM PLAT**

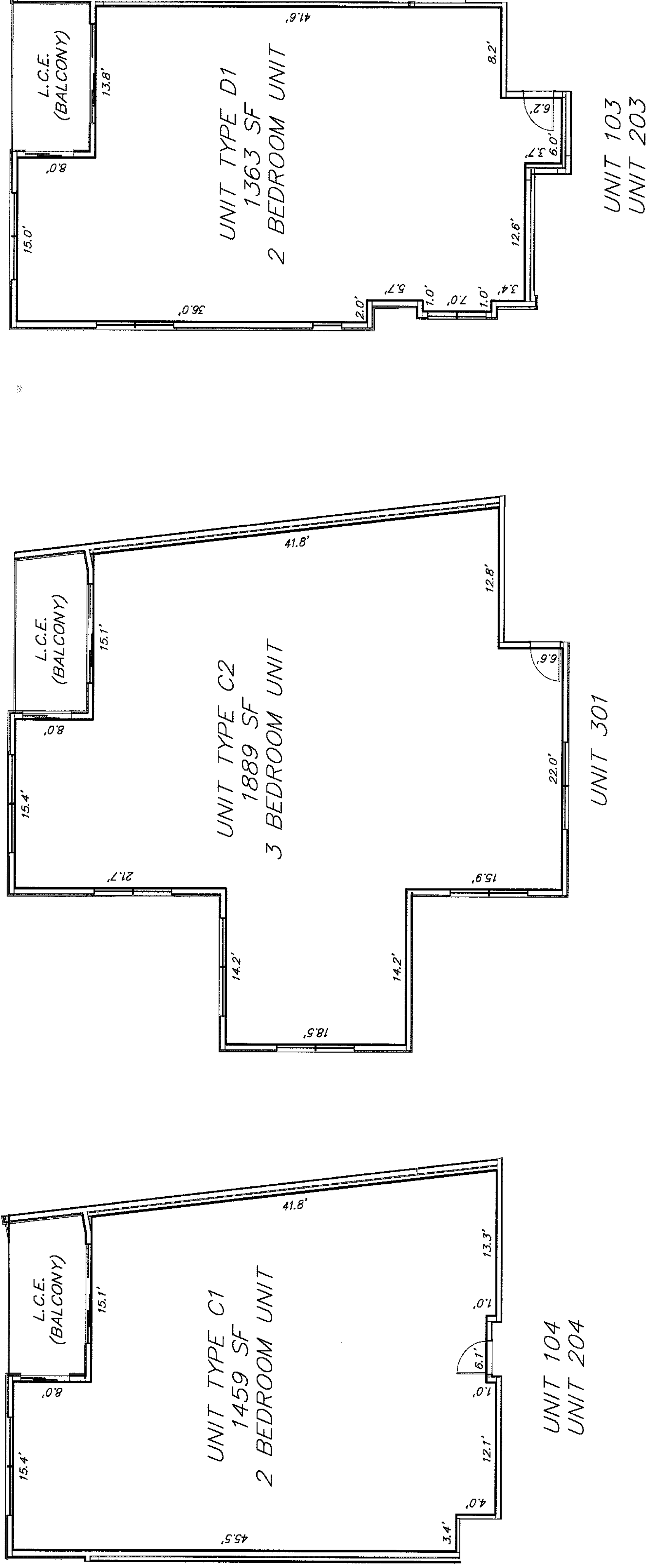
LOT 1, CERTIFIED SURVEY MAP NUMBER 14604, AS RECORDED IN VOLUME 101 OF  
CERTIFIED SURVEY MAPS, ON PAGES 99-105, AS DOCUMENT NUMBER 5357398,  
DANE COUNTY REGISTRY, VILLAGE OF McFARLAND, DANE COUNTY, WISCONSIN.



11-15-2017

**Notes:**

- 1) The Unit dimensions and Unit areas shown on this condominium plat are approximate and do not supersede the Unit boundaries as set forth in the condominium declaration.
- 2) The Unit floor plans shown hereon are approximate and are based on drawings provided by the Architect.
- 3) All balconies attached to the Units shown hereon are Limited Common Element (L.C.E.) and are appurtenant to their respective residential Unit.



**PREPARED FOR:**  
Beach House Properties, LLC  
5020 Voges Road  
Madison, WI 53718

**PREPARED BY:**  
Vierbicher Associates, Inc.  
By: Paul R. Knudson  
999 Fourier Drive,  
Suite 201  
Madison, WI 53717  
(608) 826-0532  
pknu@vierbicher.com

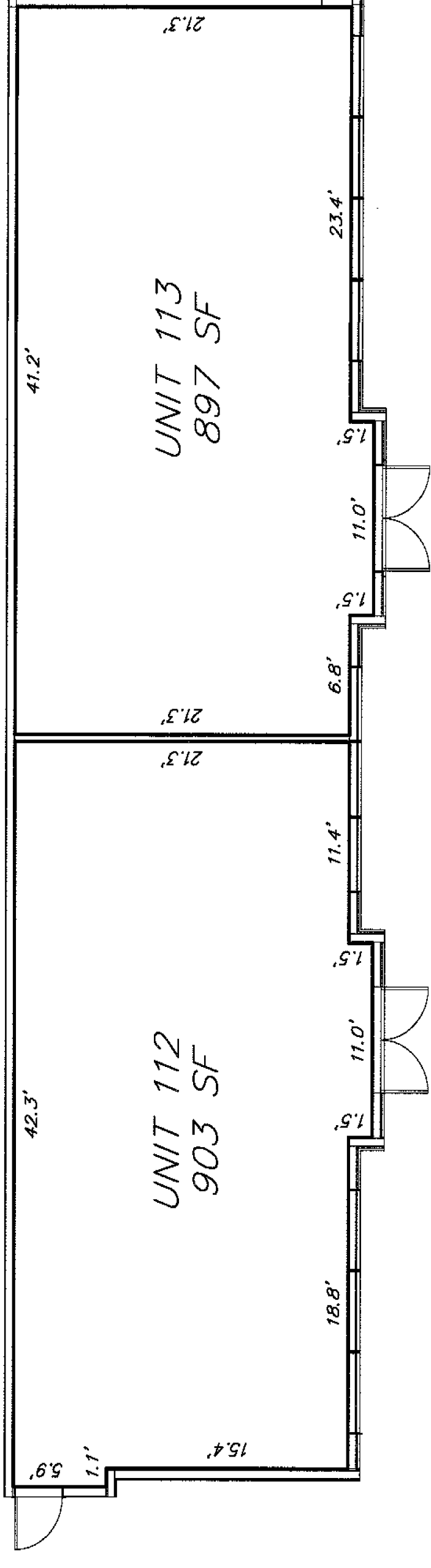
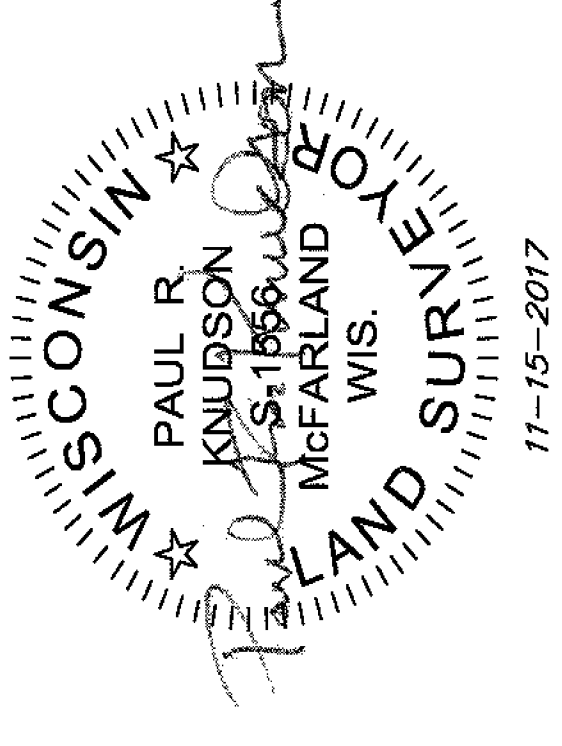
Drafted by: SCHR  
Checked by: PKNU  
Date: 11/15/2017  
FN: 150252  
Sheet 10 of 11

**vierbicher** | engineers | advisors  
planners

REEDSBLDG - MADISON - PARKEDUCHEIN  
999 Fourier Drive, Suite 201, Madison, WI 53717  
Phone: (608) 826-0532 Fax: (608) 826-0530

**WAUBESA SHORES CONDOMINIUMS,  
A CONDOMINIUM PLAT**

LOT 1, CERTIFIED SURVEY MAP NUMBER 14604, AS RECORDED IN VOLUME 101 OF  
CERTIFIED SURVEY MAPS, ON PAGES 99-105, AS DOCUMENT NUMBER 5357398,  
DANE COUNTY REGISTRY, VILLAGE OF McFARLAND, DANE COUNTY, WISCONSIN.



**Notes:**

- 1) The Unit dimensions and Unit areas shown on this condominium plat are approximate and do not supersede the Unit boundaries as set forth in the condominium declaration.
- 2) The Unit floor plans shown hereon are approximate and are based on drawings provided by the Architect.

**PREPARED FOR:**  
Beach House Properties, LLC  
5020 Voges Road  
Madison, WI 53718

**PREPARED BY:**  
Vierbicher Associates, Inc.  
By: Paul R. Knudson  
999 Fourier Drive,  
Suite 201  
Madison, WI 53717  
(608) 826-0532  
pknu@vierbicher.com

Drafted by: SCHR  
Checked by: PKNU  
Date: 11/15/2017  
FN: 150252  
Sheet 11 of 11

