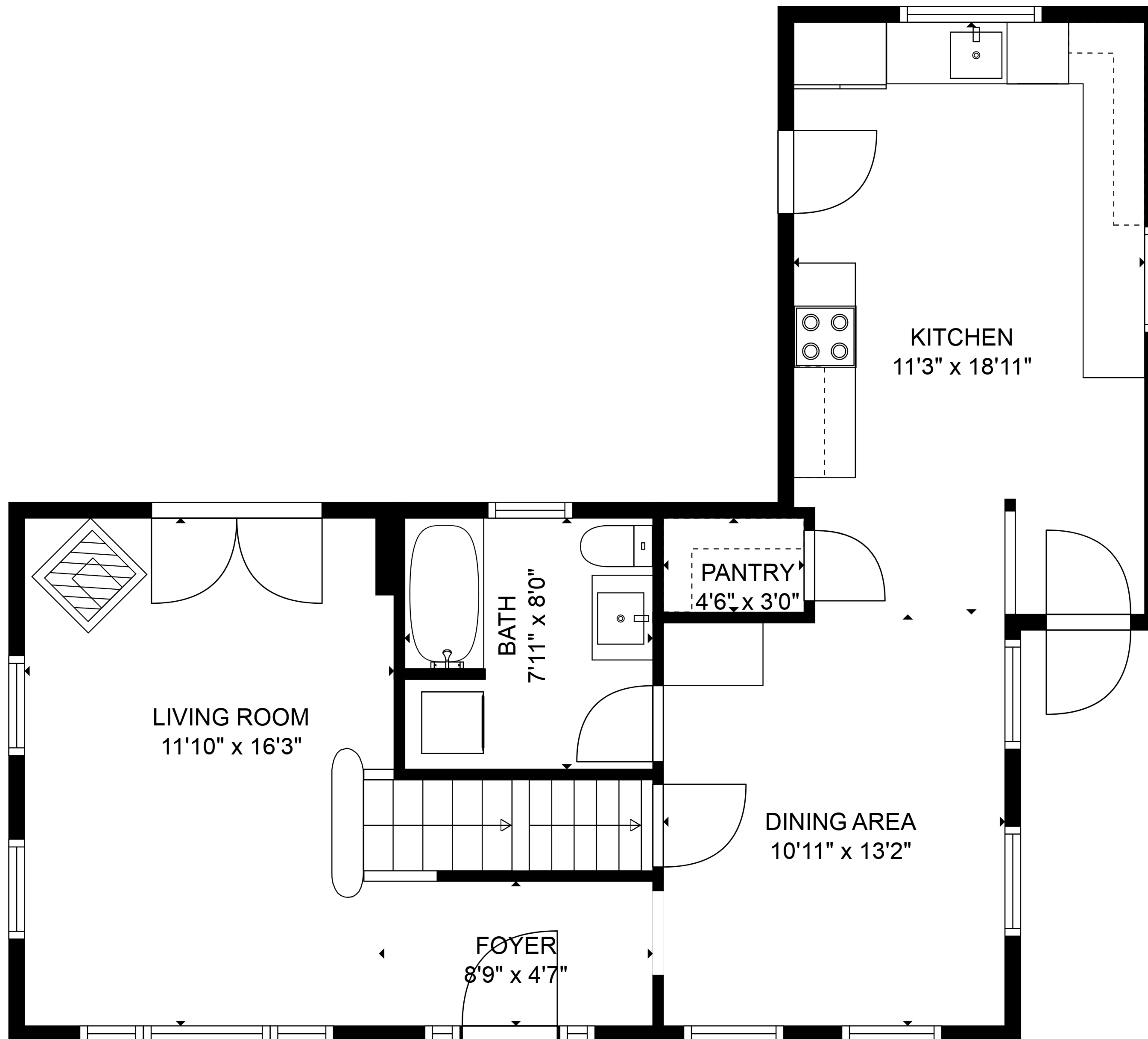


BASEMENT
31'4" x 19'4"

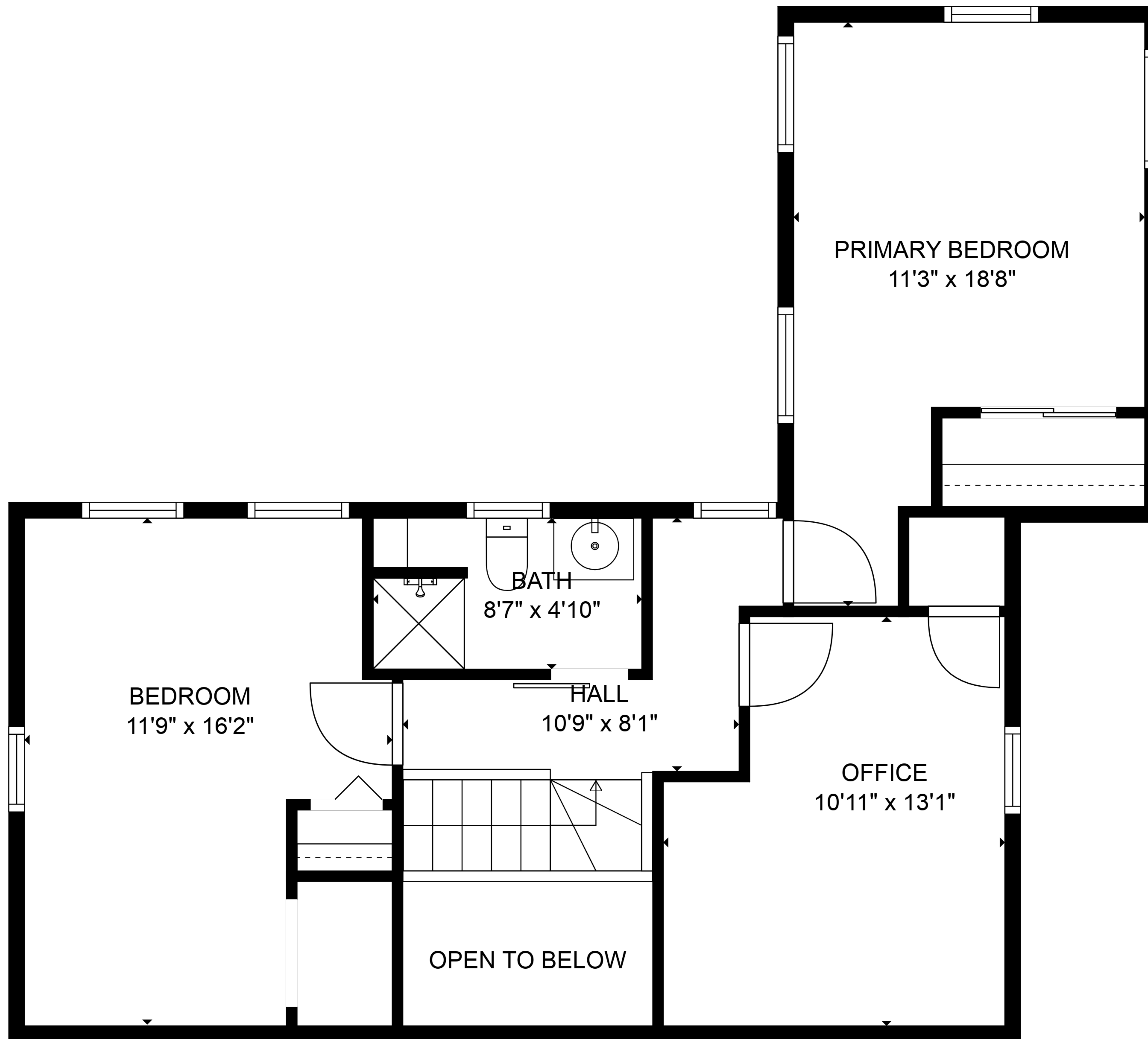
STORAGE
11'3" x 15'6"

TOTAL: 1813 sq. ft

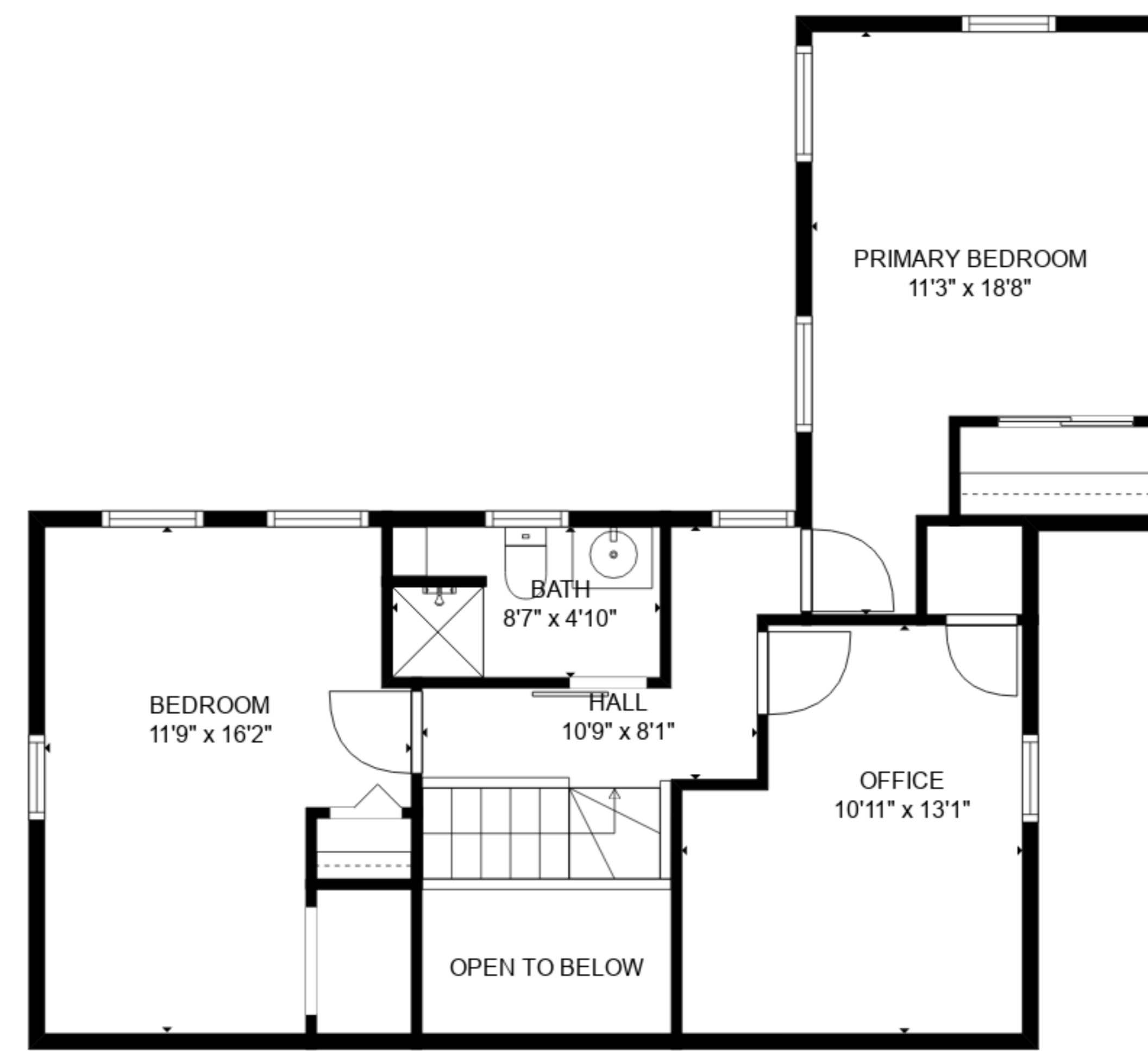
BELOW GROUND: 539 sq. ft, FLOOR 2: 700 sq. ft, FLOOR 3: 574 sq. ft
EXCLUDED AREAS: STORAGE: 174 sq. ft, OPEN TO BELOW: 38 sq. ft, LOW CEILING: 73 sq. ft
WALLS: 206 sq. ft



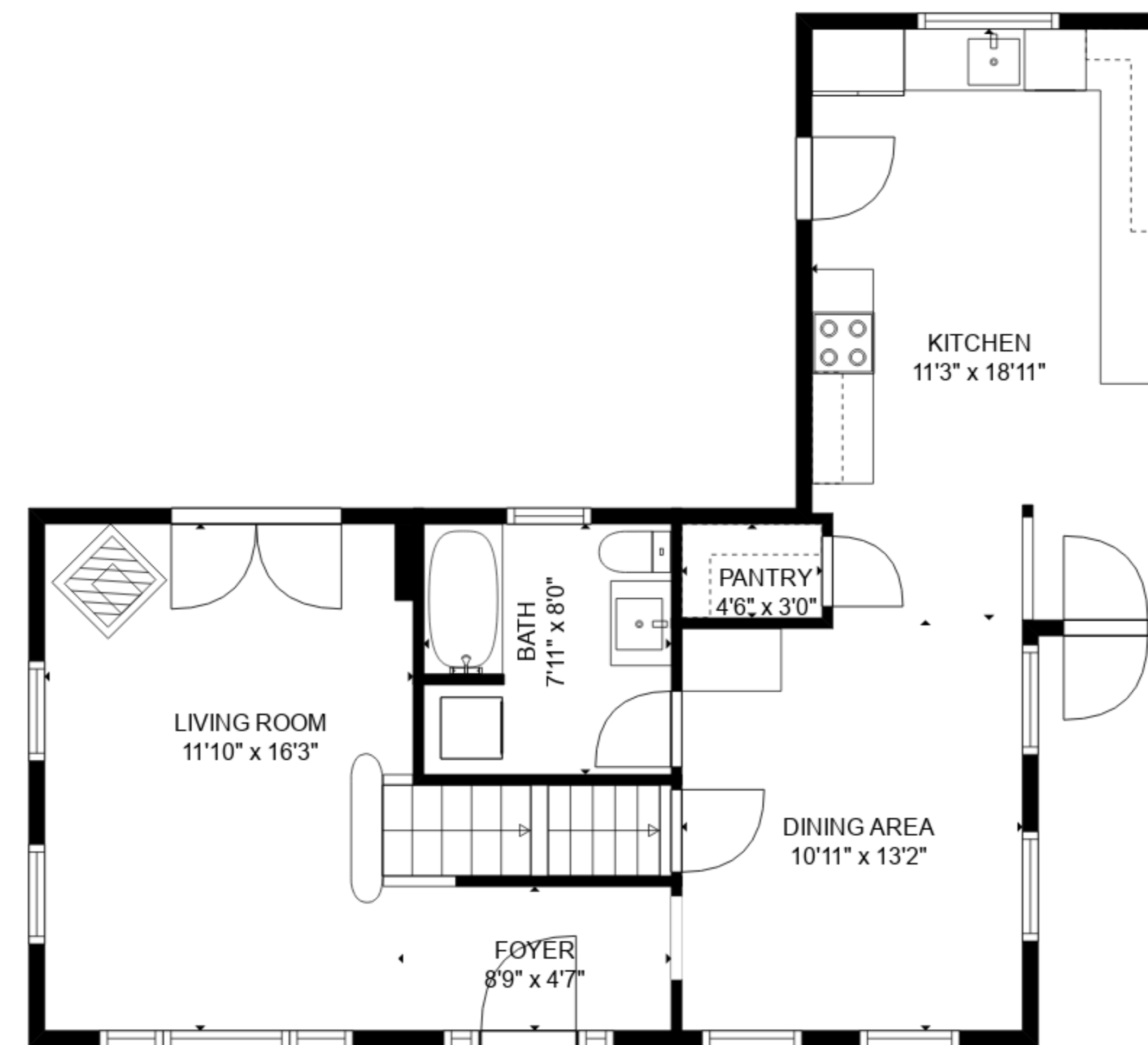
TOTAL: 1813 sq. ft
 BELOW GROUND: 539 sq. ft, FLOOR 2: 700 sq. ft, FLOOR 3: 574 sq. ft
 EXCLUDED AREAS: STORAGE: 174 sq. ft, OPEN TO BELOW: 38 sq. ft, LOW CEILING: 73 sq. ft
 WALLS: 206 sq. ft



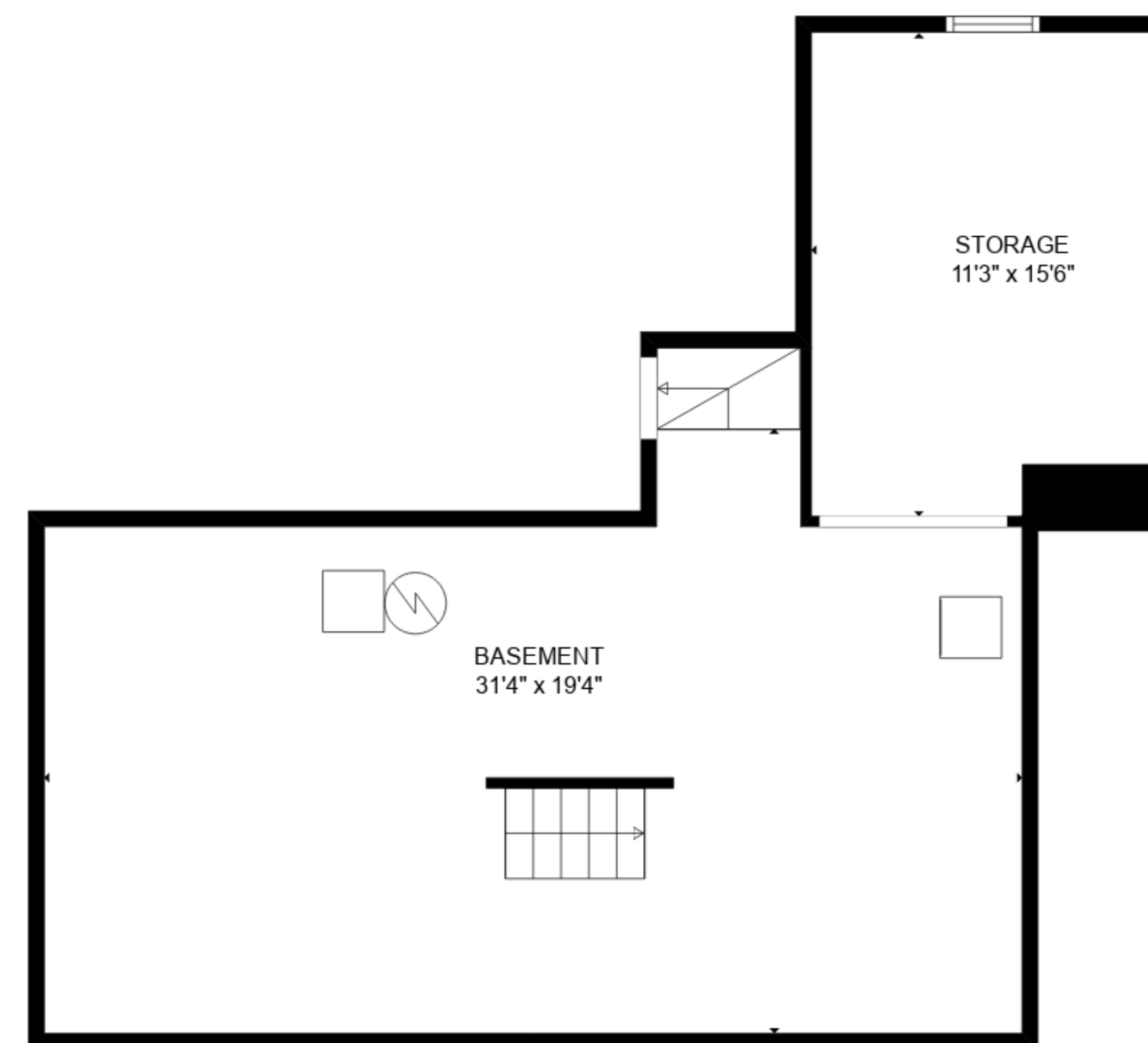
TOTAL: 1813 sq. ft
 BELOW GROUND: 539 sq. ft, FLOOR 2: 700 sq. ft, FLOOR 3: 574 sq. ft
 EXCLUDED AREAS: STORAGE: 174 sq. ft, OPEN TO BELOW: 38 sq. ft, LOW CEILING: 73 sq. ft
 WALLS: 206 sq. ft



FLOOR 3



FLOOR 2



FLOOR 1

TOTAL: 1813 sq. ft
 BELOW GROUND: 539 sq. ft, FLOOR 2: 700 sq. ft, FLOOR 3: 574 sq. ft
 EXCLUDED AREAS: STORAGE: 174 sq. ft, OPEN TO BELOW: 38 sq. ft, LOW CEILING: 73 sq. ft
 WALLS: 206 sq. ft