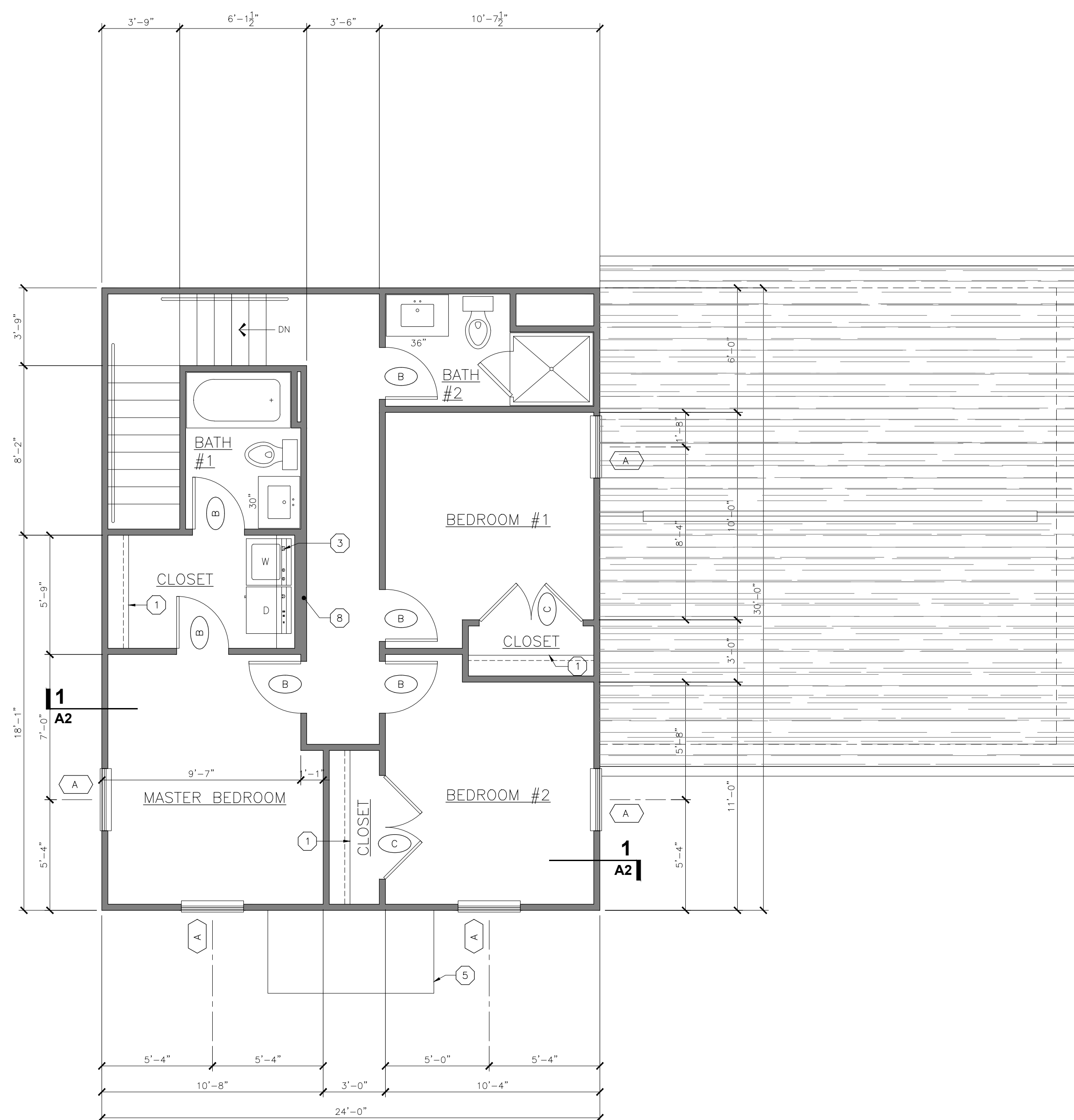
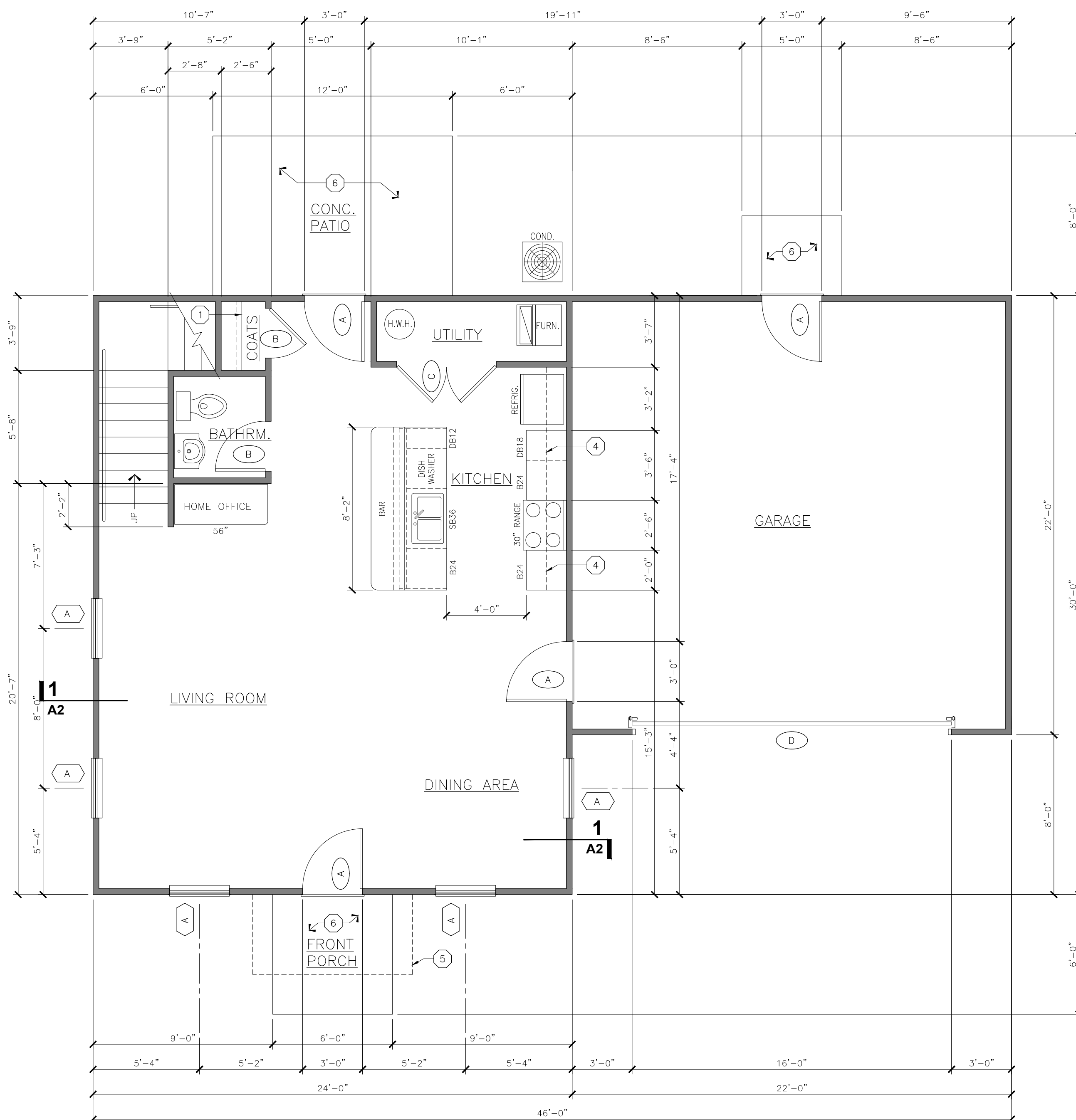


[illegible]

2ND FLOOR DIMENSIONAL PLAN



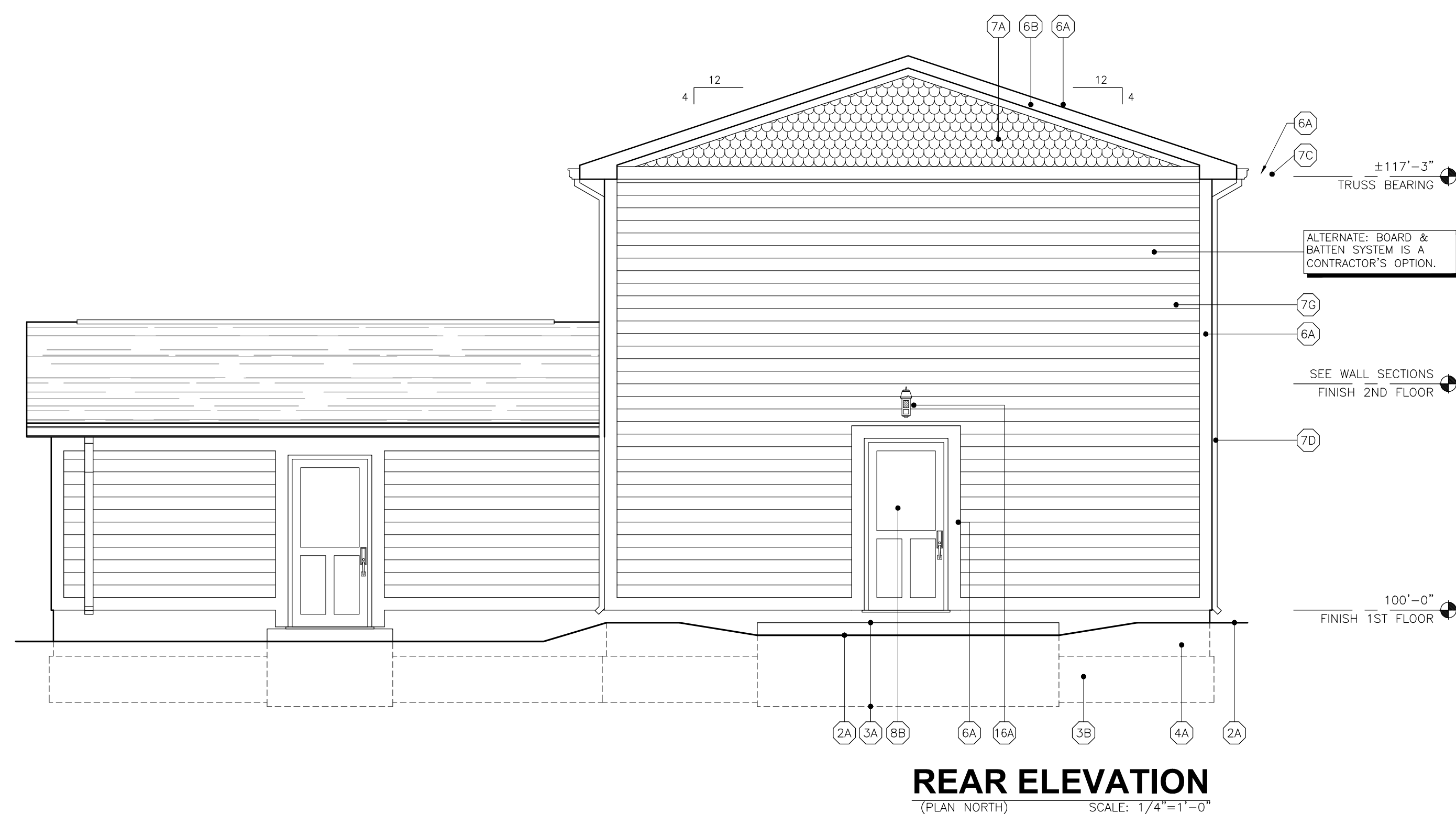
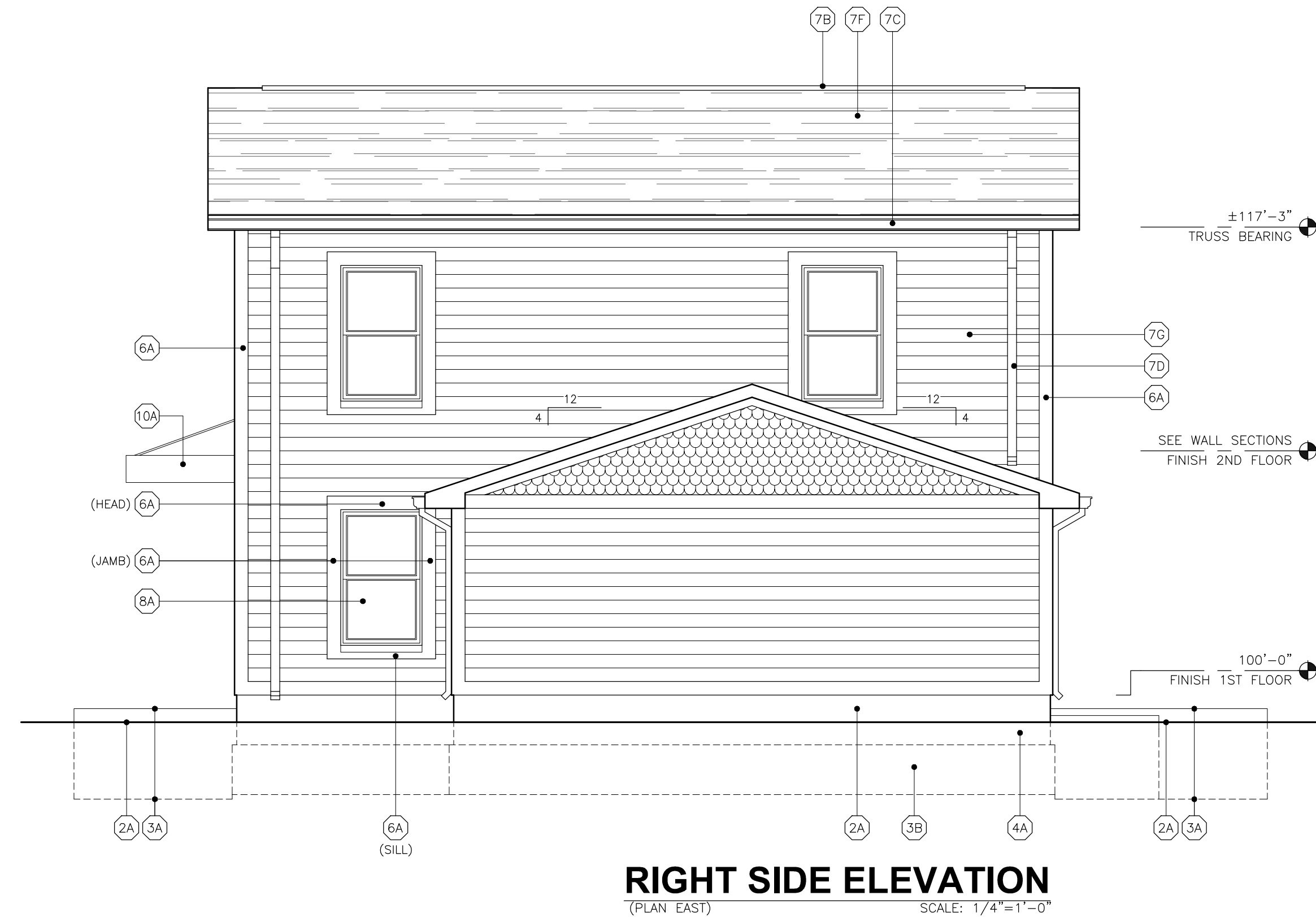
1ST FLOOR DIMENSIONAL PLAN

[illegible]



A2



[illegible]








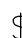

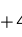
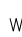








ELECTRICAL

648. ALL DISCONNECTS AND CIRCUIT BREAKERS SHALL BE MARKED FOR IDENTIFICATION

KEY NOTES:

- ## ELECTICAL & LIGHTING LEGEND

- | | |
|---|---|
|  | 120V DUPLEX RECEPTACLE |
|  | 120V DUPLEX RECEPTACLE, ONE SIDE SWITCHED |
|  | 120V QUAD RECEPTACLE |
|  | 120V DUPLEX RECEPTACLE WITH GROUND FAULT INTERRUPTER |
|  | 240V APPLIANCE RECEPTACLE |
|  | JUNCTION BOX |
|  | DISCONNECT |
|  | SINGLE POLE SWITCH |
|  | THREE WAY SWITCH |
|  | DEVICE MOUNTING HEIGHT |
|  | DEVICE IN WEATHERPROOF ENCLOSURE OR BOX |
|  | ELECTRICAL PANEL, SIZE & TYPE AS NOTED |
|  | TELEPHONE OUTLET |
|  | RECESSED CAN LIGHT, AS SELECTED BY CONTRACTOR |
|  | 2 BULB SURFACE MOUNTED LIGHT FIXTURE, AS SELECTED BY CONTRACTOR |
|  | 75 CFM EXHAUST FAN/LIGHT, SEE HVAC PLANS FOR DUCTING |
|  | WALL MOUNTED SMOKE DETECTOR, POWERED FROM HOUSE CURRENT W/ BATTERY BACKUP |



HVAC

1 PROVIDE WALL JACK W/ BIRD SCREEN FOR BATHROOM EXHAUST FAN

[illegible]