

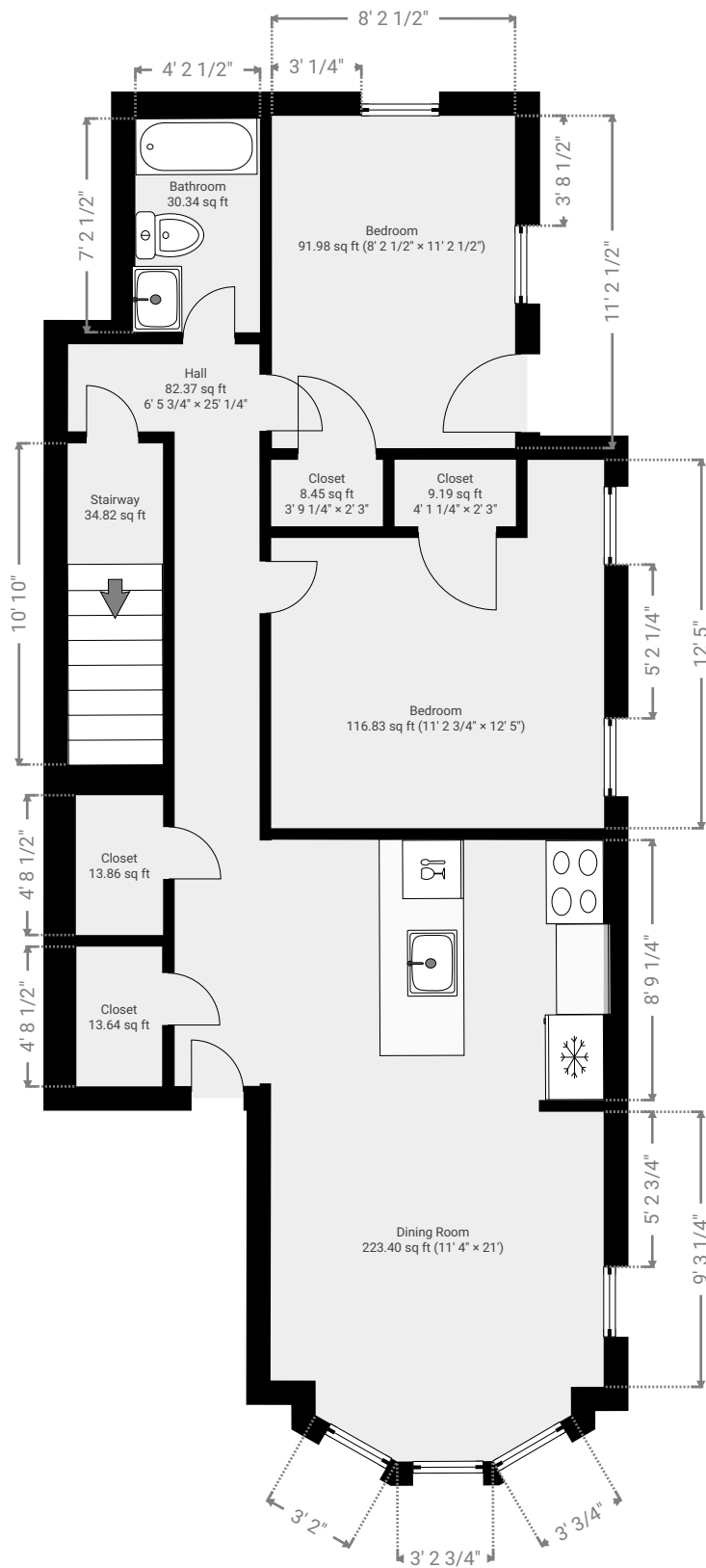
1 copeland st, Roxbury, MA | Unit 01

1 Copeland Park, 02119 Boston, Massachusetts, US
TOTAL AREA: 771.92 sq ft • LIVING AREA: 771.92 sq ft • FLOORS: 1 • ROOMS: 10

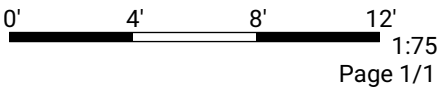


▼ 1st Floor

TOTAL AREA: 771.92 sq ft • LIVING AREA: 771.92 sq ft • ROOMS: 10



THIS FLOORPLAN IS PROVIDED WITHOUT WARRANTY OF ANY KIND. SENSOPIA DISCLAIMS ANY WARRANTY INCLUDING, WITHOUT LIMITATION, SATISFACTORY QUALITY OR ACCURACY OF DIMENSIONS.

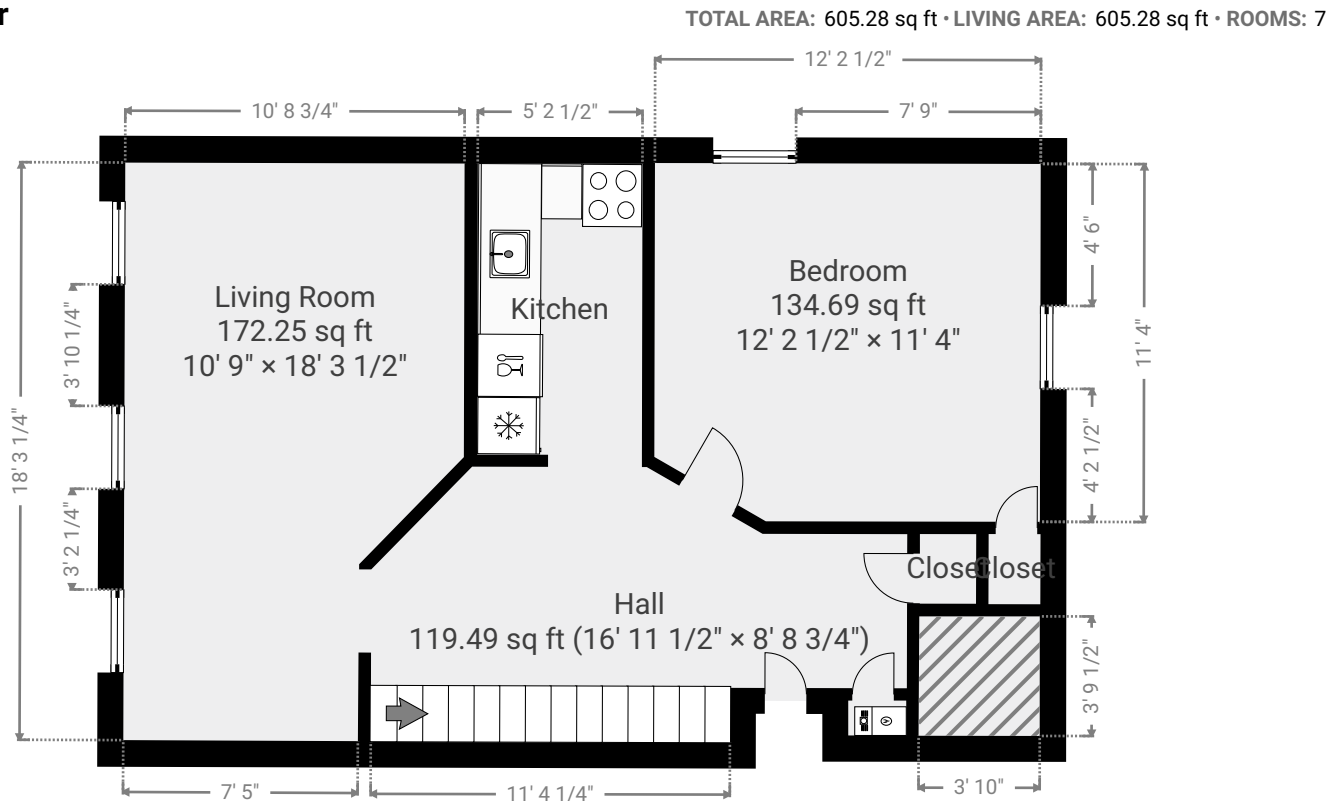


1 copeland Park, Roxbury, MA I unit 02

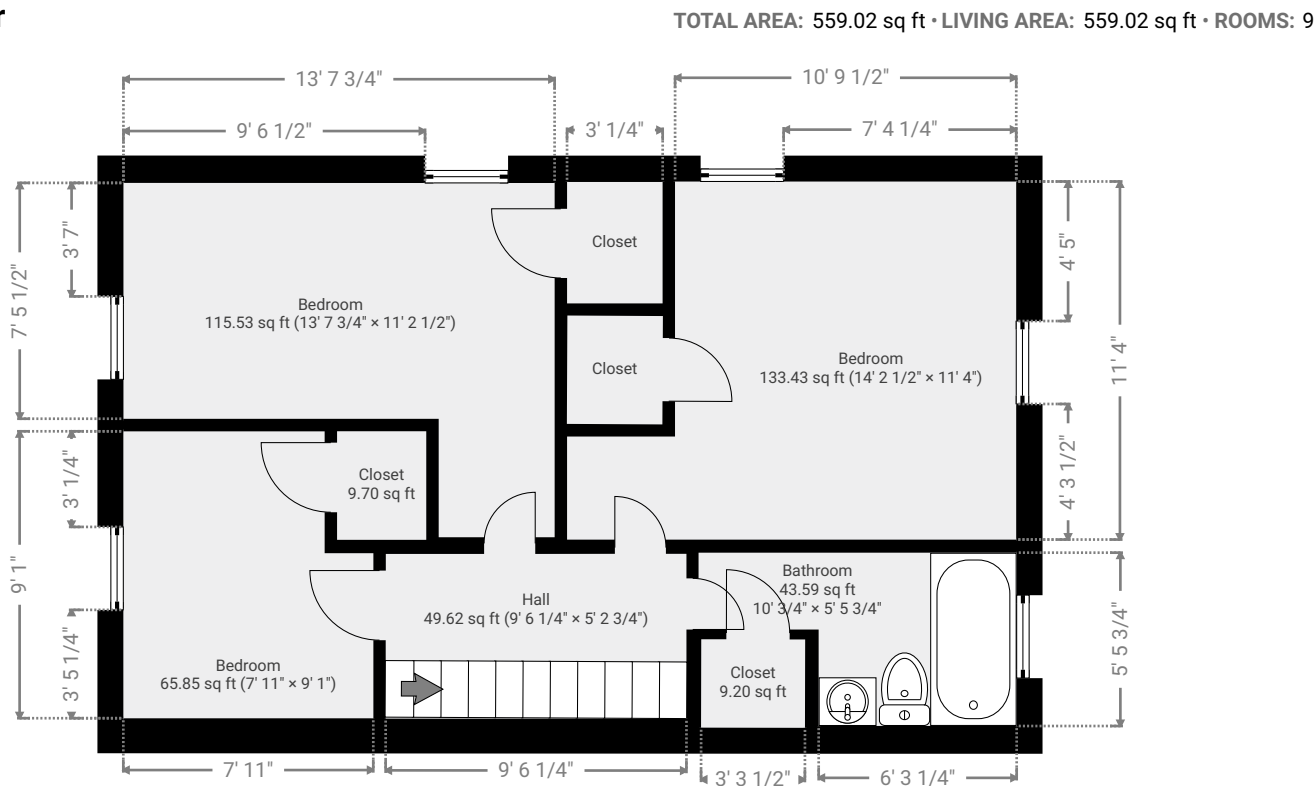
1 Copeland Park, Roxbury, USA
TOTAL AREA: 1164.30 sq ft • LIVING AREA: 1164.30 sq ft • FLOORS: 2 • ROOMS: 16



▼ 1st Floor



▼ 2nd Floor



THIS FLOORPLAN IS PROVIDED WITHOUT WARRANTY OF ANY KIND. SENSOPIA DISCLAIMS ANY WARRANTY INCLUDING, WITHOUT LIMITATION, SATISFACTORY QUALITY OR ACCURACY OF DIMENSIONS.