



About the Neighbourhood Central Saanich- Brentwood Bay

1277 Benvenuto Ave
Central Saanich

Thomas Kala* & Courtney Kala*
Alicia Gilmour & Ryan Gilmour

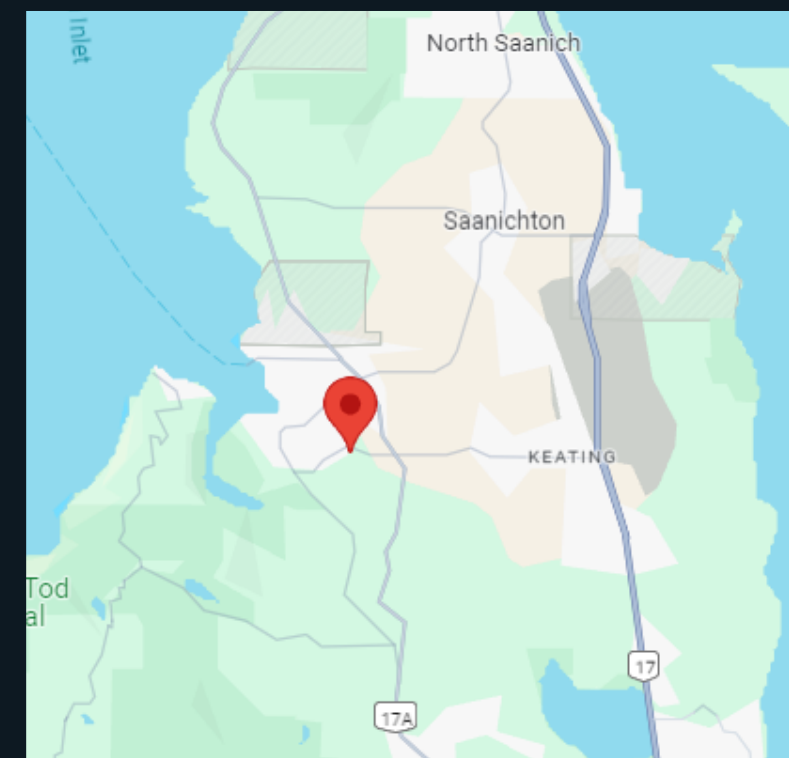
Brentwood Bay in Central Saanich epitomizes serene West Coast living with its lush landscapes and coastal charm. Home to the renowned Butchart Gardens and a vibrant marina, this community offers recreational activities like kayaking and scenic boat tours. Residents enjoy local markets, schools, and parks, with easy access to Victoria. Brentwood Bay's blend of rural beauty and modern amenities makes it a prime location for those valuing a peaceful lifestyle close to nature.

Pinnacle Homes Group

ryan@pinnaclehomesgroup.com
778-601-7941

PinnacleHomesGroup.com

778-404-7668

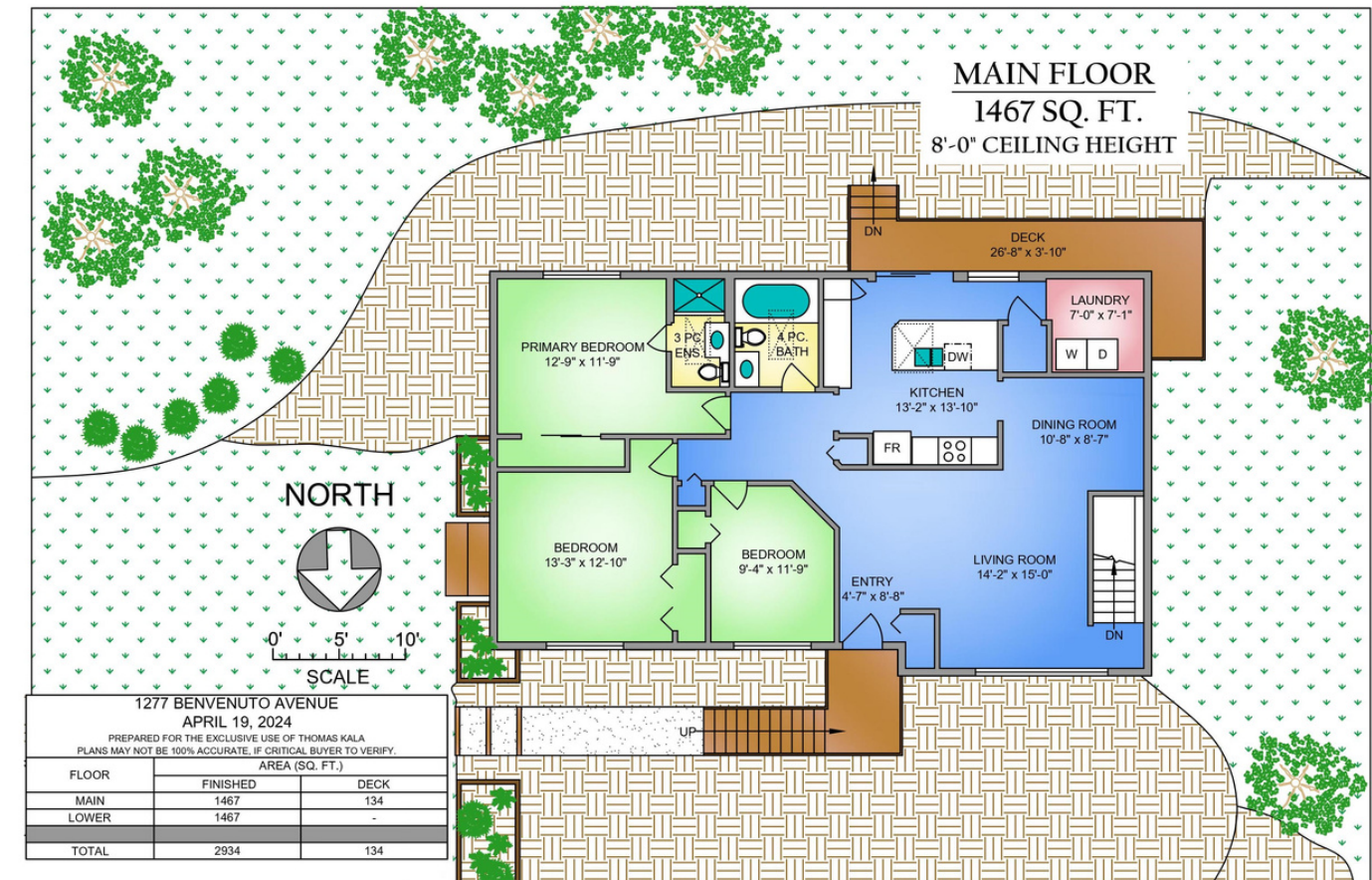




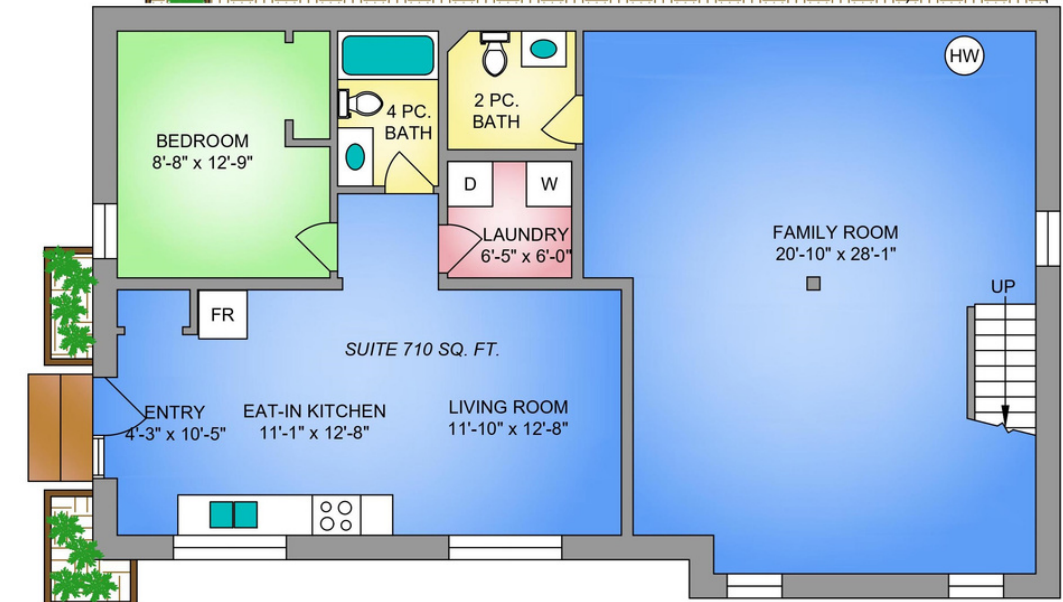
4 Bed 4 Bath 2934 sq. ft.

Adjacent to Oak Haven Park, this charming Brentwood Bay residence sprawling across 1.32 acres is the ideal choice for young families or savvy investors. Featuring 3 bedrooms and 2 bathrooms on the main floor, including a primary bedroom with ensuite, this home offers ample space for comfortable living. The sizable recreation room on the lower level is perfect for transforming into a home gym, office, or media room to suit your needs. Additionally, the legal 1-bedroom, 1-bathroom suite with laundry presents a great opportunity for rental income. Conveniently situated on a main bus route, commuting and errands are effortless. Be sure to keep an eye out for delightful farm stands with fresh eggs and gorgeous flowers along the road. Plus, Brentwood Bay's amenities, including shops, restaurants, and renowned attractions like Butchart Gardens & Butterfly World, are just moments away. Welcome home to a perfect blend of comfort, convenience, and natural beauty.

Floor Plans



LOWER FLOOR
762 SQ. FT.
8'-0" CEILING HEIGHT



*Personal Real Estate Corporation

